



SSS SWEEPERS

MODELS MS-21 & MS-29

INTRODUCTION

OPERATING & MAINTENANCE INSTRUCTIONS

READ THIS BOOK

This operator's book has important information for the use and safe operation of this machine. Read this book carefully before starting the machine. Keep this book and tell all operators to read the book. If you do not follow the instructions, you can cause an injury or damage equipment, furniture or buildings.

The contents of this manual are based on the latest product information available at the time of publication. Triple S reserves the right to make changes or improvements to its machines without notice.

For new books write to:

Triple S
2 Executive Park Drive
Billerica, MA 01862

**FOR YOUR CONVENIENCE, RECORD THE
FOLLOWING IMPORTANT INFORMATION:**

Carefully inspect all components to ensure that there is no concealed freight damage. If such damage is discovered, file a "CONCEALED DAMAGE REPORT" immediately with the delivering carrier.

MODEL _____
SERIAL NUMBER _____
PART NUMBER _____
DATE PURCHASED _____

OPERATION

Introduction

The SSS Sweepers, Models MS-21 and MS-29 are designed with two counter rotating brushes that can pick up small and large debris on hard, flat surfaces. The sweepers will pick up paper, leaves and general litter – both inside and out. However they are not designed for dust. The debris is swept into the hopper and the hopper is easily removed by lifting the handle; then the hopper can be carried separately for disposal of the debris.

Assembly

Your sweeper requires little assembly before operation. Follow these simple steps:

1. **Secure the front cover to the hopper.** Fit them together by placing the two bottom corners of the hopper to the locating lugs on the corners of the front cover. After these are fitted together, the hopper's handle (Item 21) can be pushed down - this latches the front cover and hopper together.
2. **Assemble the operator's handle.** The machine handle is shipped in three parts: the "U" shaped tube and the two straight lower tubes.
 - a) First connect each straight tube to the U tube. Depress the spring clip on the straight tube and slide it into the U tube until it clicks into the chosen hole. The handle height is adjusted by selecting either the top or bottom pair of holes.
 - b) Connect the handle assembly to the machine. Unscrew the clamping knobs (Item 2) from each side of the machine. The handle tubes will fit over the exposed screws. Then screw the knobs back on.

Operation

This sweeper can be used for both indoor and outdoor sweeping.

DO NOT PICK UP ANYTHING THAT IS BURNING OR SMOKING, SUCH AS CIGARETTES, MATCHES OR HOT ASHES.

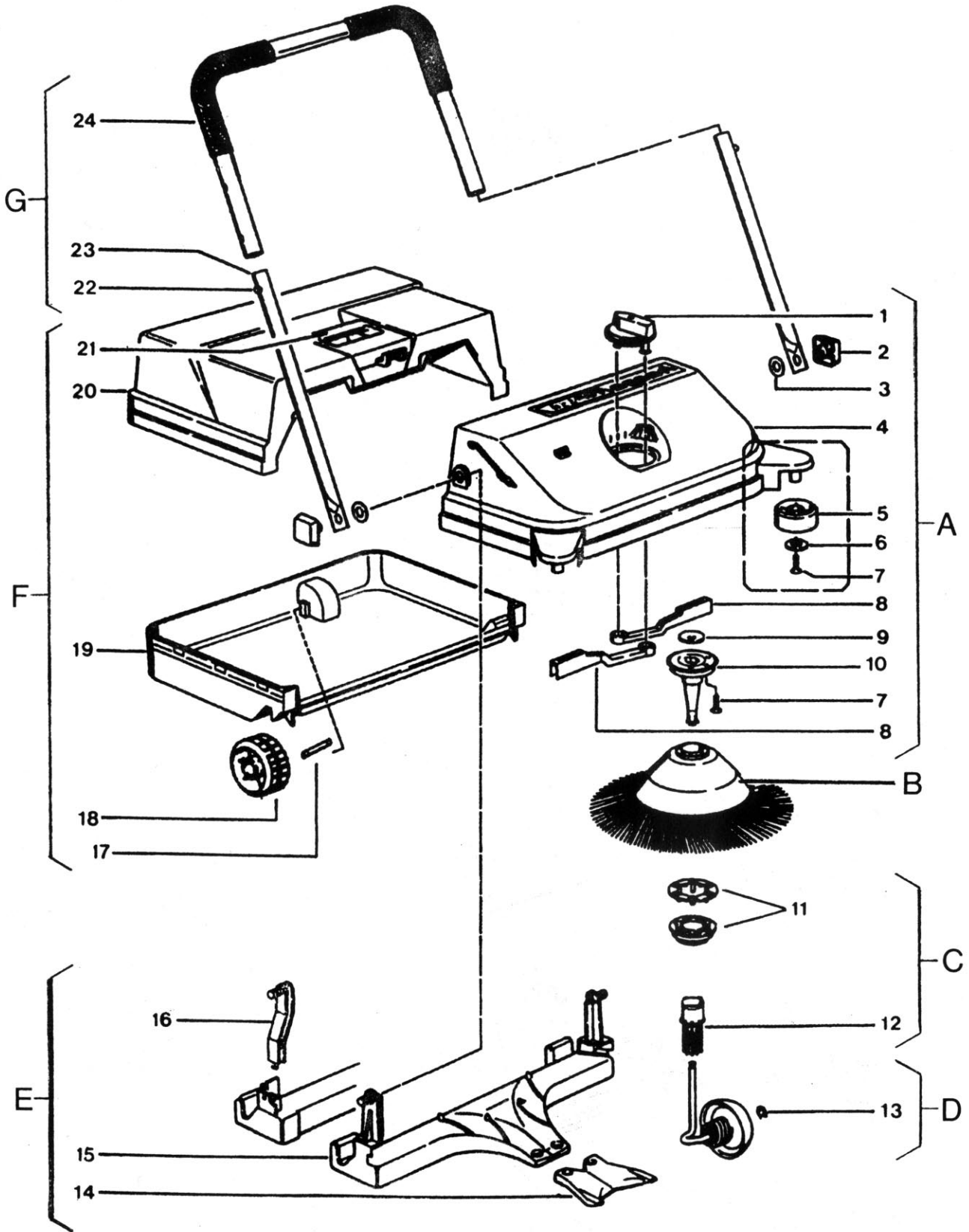
1. Make sure the hopper and front cover are **securely fastened** (reference Assembly #1).
2. Adjust the **handle height** for the operator (reference Assembly #2).
3. Adjust the **brush pressure** to accommodate your pick up needs. The height adjustment dial (Item # 1) is located on the front of the sweeper. For larger debris use a high setting, number 1 is the highest position. Move to a higher number (lower position) for picking up finer debris. Do not press the brushes too firmly to the ground because this will eventually wear out the drive mechanism.
4. **Start sweeping.** The overlapping brushes ensure good coverage. The edge guide rollers on both sides enable the brushes to reach into corners. Dirt and debris will be pushed into the hopper as soon as you begin pushing the sweeper. The carrying capacity of the hopper can be increased by raising the front of the sweeper, this will move debris to the back of the hopper.
5. **Empty the hopper** when you're done sweeping. Simply pull up on the hopper's handle and lift the hopper off the front cover. Dispose of the debris in an approved waste receptacle. **Clean** the hopper if necessary. **Reattach** the hopper to the front cover.
6. To **transport** the sweeper place the handle in the down position: loosen the clamps on each side of the machine, then lower the handle toward the brushes until it slides past the molded stoppers. Retighten the clamps. Remember to loosen the clamps before raising the handle again.
7. **Storage:** Store the sweeper indoors. The sweeper may be stored in the standing or hanging position. To hang the sweeper, place the handle in the down position as described in Step 6.

MAINTENANCE

1. **Hopper:** We recommend that the hopper be emptied after each use.
2. **Clean the hopper and machine** by wiping with a dry cloth as needed.
3. **Brushes:** After each use, remove any strings or debris. See Step 5 for cleaning and replacement.
4. **Replacement or Cleaning of the Angled Wheels (D):** Set the height adjustment dial to position 8. Pull the angled wheel (D) strongly, to remove it and its axle from the tooth sleeve. Clean or replace the wheel, then push it firmly back into the tooth sleeve. Make sure you place the wheels back in their correct positions, they are marked L and R for the left and right positions.
5. **Cleaning or Replacement of the Brushes (B) and Nylon Gear Casing (C):** Remove the angled wheel (D) as explained in Step 4. Pull the brush towards you - the brush and gear will come away from the pivot housing. The gear can now be pulled away from the brush. The brushes and gears may be cleaned with water. The gears should only be lubricated with silicone spray.

Ensure that the brushes and gears are fitted on the correct side of the sweeper when reassembling. To guide you, the inside of the front cover is marked L and R, as are the wheels (D) and each brush is marked L/// and R\\ which indicates the direction of the bristle point. To reassemble, place the brush over the pivot housing then push the nylon gear (C) over the pivot housing. Refit the angled wheel.

MS-21 & MS-29



MS-21 & MS-29 PARTS LIST

ITEM	MS-21 PART NUMBER	MS-29 PART NUMBER	DESCRIPTION	QTY
	715404	715414	Machine, Complete	
A	712301	712310	Front Cover Complete	
1	712701	712701	Height Adjustment Dial	1
2	712001	712001	Clamp	2
3	712002	712002	Washer, Clamp	2
4	712302	712311	Front Cover	1
5	717501	717501	Edge Guiding Roller	2
6	980631	980631	Washer, Edge Roller	2
7	960032	960032	Screw	2
8	718501	718510	Adjustment Slide	2
9	980632	980633	Washer, Pivot Housing	2
10	714201	714210	Pivot Housing	2
B	710901	710902	Circular Brush Set, Left&Right	1
	710901L	710902L	Brush, Left	
	710901R	710902R	Brush, Right	
C	718101	718110	Tooth Sleeve with Clutch Left	1
	718102	718111	Tooth Sleeve with Clutch Right	1
11	712401	712410	Clutch Complete, Left	
	712402	712411	Clutch Complete, Right	
12	713501	713502	Tooth Sleeve	
D	719701	719702	Wheel Set Complete	1
	719701L	719702L	Wheel, Left	
	719701R	719702R	Wheel, Right	
13	980634	980634	Washer, 6mm	
E	716601	716610	Sweeping Plate with Lip	1
14	715101	715101	Sweeping Lip	
15	NA	NA	Sweeping Plate	
16	714001	714001	Holder	
F	714501	714510	Hopper Complete	1
17	717701	717701	Axle	
18	719703	719704	Wheel	
19	714502	714511	Bottom, Hopper	
20	714503	714512	Cover, Hopper	
21	713901	713901	Handle, Hopper	
G	713902	713910	Handle, Machine Complete	1
22	712101	712101	Spring Clip	
23	719001	719001	Straight Tube	
24	713903	713904	U Handle Section	
	713701	713701	Grips, 2 pcs./set	2

SSS SWEEPER, MODELS MS-21 & MS-29 LIMITED WARRANTY

The SSS Sweeper, Model MS has been manufactured, tested and inspected in accordance with specific engineering requirements, and is WARRANTED by the manufacturer to be free from defects in workmanship and materials.

This warranty is, however, subject to the following qualifications, conditions and limitations which are set forth to provide you and all users of the SSS Sweeper with information concerning the duration, extent, availability and applicability of this Limited Warranty, the procedure to be taken to obtain its performance and other information concerning the manufacturer's warranty policy.

1. TO WHOM EXTENDED AND DURATION OF ITEMS COVERED

This warranty extends to the original consumer purchaser from the date it was purchased and for the items and periods as follows:

One (1) year unless excluded below.

2. PARTS NOT COVERED BY WARRANTY

Certain parts of the SSS Sweeper require replacement in the ordinary course of use due to normal wear by reason of their characteristics. This warranty does not cover normal wear items such as brushes.

3. EXCEPTIONS AND EXCLUSIONS FROM WARRANTY

Defects, malfunctions, failure or damage of the SSS Sweeper caused by improper, unreasonable or negligent use or abuse while in the possession of the consumer are likewise excluded from this warranty.

If repair is done on your SSS Sweeper by anyone other than those below designated as authorized to perform such work without first having obtained factory instructions, the manufacturer, at its sole option, may determine that this warranty will not apply and that reimbursement for such repair will not be made because of the failure to comply with such factory specified instructions.

4. PROCEDURE TO BE TAKEN TO OBTAIN PERFORMANCE OF WARRANTY

To secure repair of the SSS Sweeper or any warranted parts under this warranty, the following procedure should be taken:

The inoperative SSS Sweeper or warranted parts, together with satisfactory evidence of the purchase date, must be delivered with shipping and delivery charges prepaid to the Dealer from whom purchased.

If you are unable to locate the Dealer, you may write or otherwise communicate with Triple S, 2 Executive Park Drive, Billerica, MA 01862 for instructions before repair service is performed by anyone else. In such event Triple S will provide either the location of a closely available Triple S distributor Service Department or other factory instructions.

Upon compliance with the above procedure, all warranted defects will be repaired, at no additional charge or costs to the consumer, and the repaired product returned to the consumer, with all shipping and delivery charges prepaid.

In following the procedures above set forth PLEASE MAKE CERTAIN to state the Triple S model, type and serial number as shown on the name plate of the SSS Sweeper.

REPLACEMENT

In the event of the defect, malfunction or failure of your SSS Sweeper or any warranted part to conform with this warranty, the manufacturer may at its sole option and own expense, replace the SSS Sweeper or any warranted part with another new identical or reasonably equivalent model or part in lieu of repairing the defect.

5. NO REFUND OF PURCHASE PRICE

Triple S will not, as a matter of its warranty policy, refund the consumer's purchase price.

6. WARRANTY REGISTRATION CARD FOR YOUR SSS SWEEPER AND REQUESTS FOR INFORMATION

Please fill out the warranty registration card accompanying your SSS Sweeper, giving complete information as requested on the card, and return to Triple S.

This warranty is in lieu of all other expressed or implied warranties.

