

T5/T51/T53

REPAIR PARTS CATALOG NO. M30472 (G)
ISSUED February 2003

ORDERS

Please use item numbers when ordering and include the serial number of the machine (stamped on the electrical data plate) to insure that you will receive the correct parts.

Order from your HOST Distributor.

*SAVE THESE INSTRUCTIONS
READ ALL INSTRUCTIONS BEFORE USING THIS APPLIANCE*

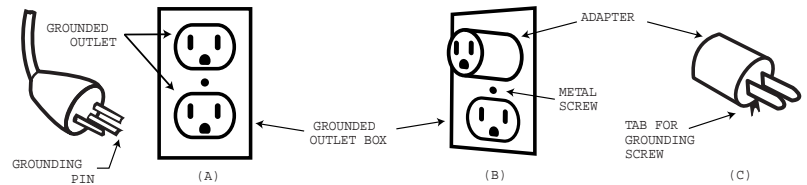
WHEN USING AN ELECTRICAL APPLIANCE, BASIC PRECAUTIONS SHOULD ALWAYS BE FOLLOWED, INCLUDING THE FOLLOWING:

WARNING – TO REDUCE THE RISK OF FIRE, ELECTRIC SHOCK, OR INJURY

1. Do not leave appliance when plugged in. Unplug from outlet when not in use and before servicing.
2. Do not use outdoors or on wet surfaces.
3. Do not allow to be used as a toy. Close attention is necessary when used by or near children.
4. Use only as described in this manual. Use only manufacturer's recommended attachments.
5. Inspect cord for damage before each use. Do not use with damaged cord or plug. If appliance is not working as it should, has been dropped, damaged, left outdoors, or dropped into water, return it to a service center.
6. Do not pull or carry by cord, use cord as a handle, close a door on cord, or pull cord around sharp edges or corners. Do not run appliance over cord. Keep cord away from heated surfaces.
7. Do not unplug by pulling on cord. To unplug, grasp the plug, not the cord.
8. Do not handle plug or appliance with wet hands.
9. Do not put any object into openings. Do not use with any opening blocked; keep free of dust, lint, hair, and anything that may reduce air flow.
10. Keep hair, loose clothing, fingers, and all parts of body away from openings and moving parts.
11. Turn off all controls before unplugging.
12. Use extra care when cleaning on stairs.
13. Do not use to pick up flammable or combustible liquids such as gasoline or use in areas where they may be present.
14. Do not pick up anything that is burning or smoking, such as cigarettes, matches, or hot ashes.
15. Do not use without filters in place.
16. Connect to a properly grounded outlet only. See Grounding Instructions.
17. Always turn off this appliance before connecting or disconnecting HOST machine.
18. Accessory receptacle is for dual machine operation only.
19. This appliance is to be used with HOST® carpet cleaning products only. Use of other cleaning products may damage this appliance.
20. Do not use for picking up health endangering dust such as asbestos.
21. This is a commercial appliance, not intended for household use.

Grounding Methods

This appliance must be grounded. If it should malfunction or break down, grounding provides a path of least resistance for electric current to reduce the risk of electric shock. This appliance is equipped with a cord having an equipment-grounding conductor and grounding plug. The plug must be inserted into an appropriate outlet that is properly installed and grounded in accordance with all local codes and ordinances.

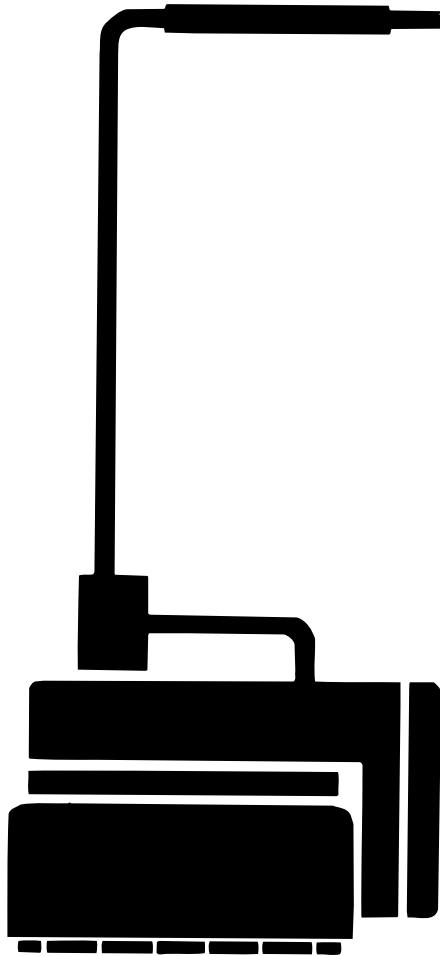


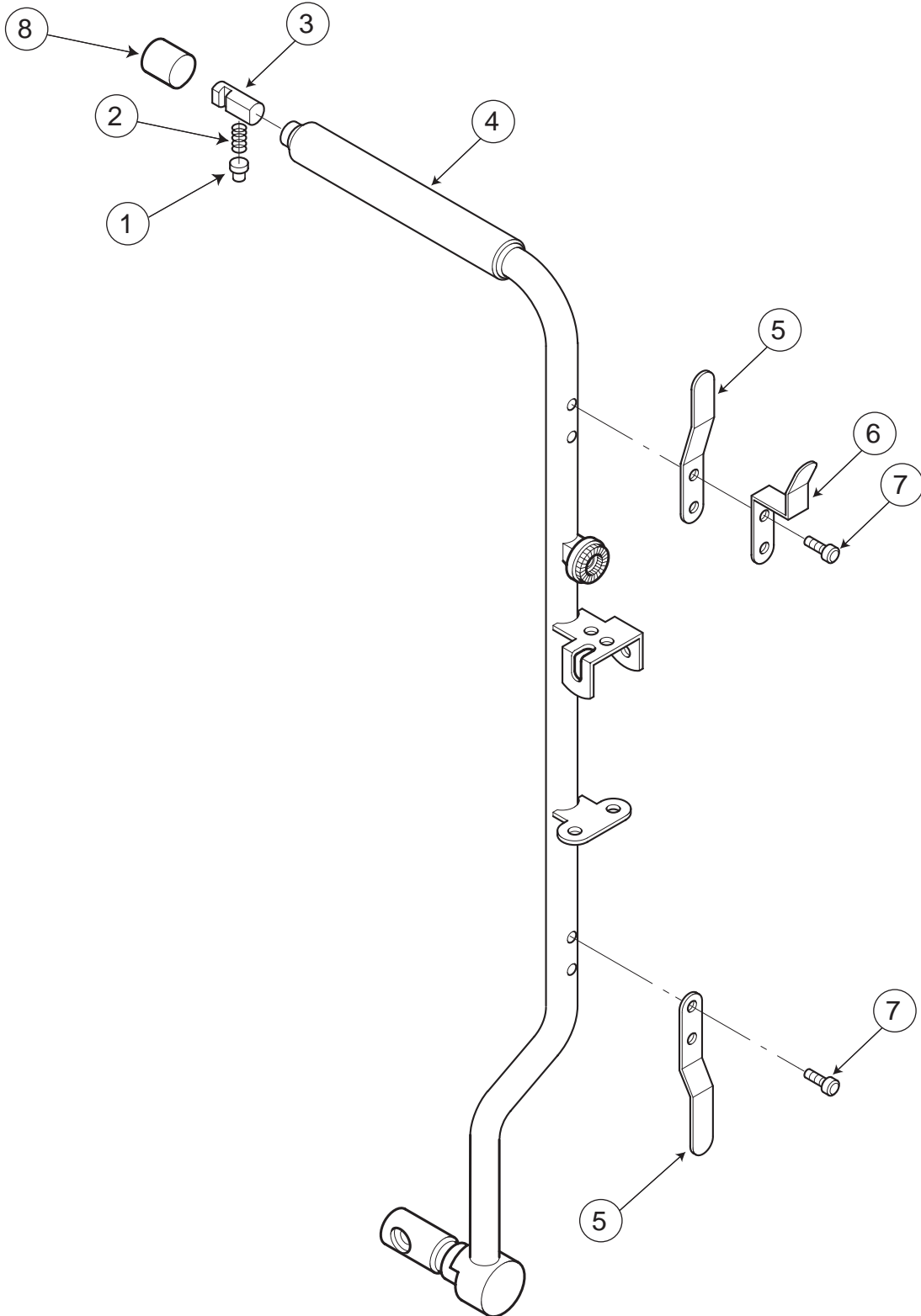
WARNING: Improper connection of the equipment-grounding conductor can result in the risk of electric shock. Check with a qualified electrician or service person if you are in doubt as to whether the outlet is properly grounded. Do not modify the plug provided with the appliance. If it will not fit the outlet, have a proper outlet installed by a qualified electrician.

This appliance is for use on a nominal 120 volt circuit, and has a grounded plug that looks like the plug illustrated in sketch A. A temporary adapter that looks like the adapter illustrated in sketches B and C may be used to connect this plug to a 2-pole receptacle as shown in sketch B if a properly grounded outlet is not available. The temporary adapter should be used only until a properly grounded outlet (sketch A) can be installed by a qualified electrician. The green colored rigid ear, lug, or the like extending from the adapter must be connected to a permanent ground outlet box cover. Whenever the adapter is used, it must be held in place by a metal screw.

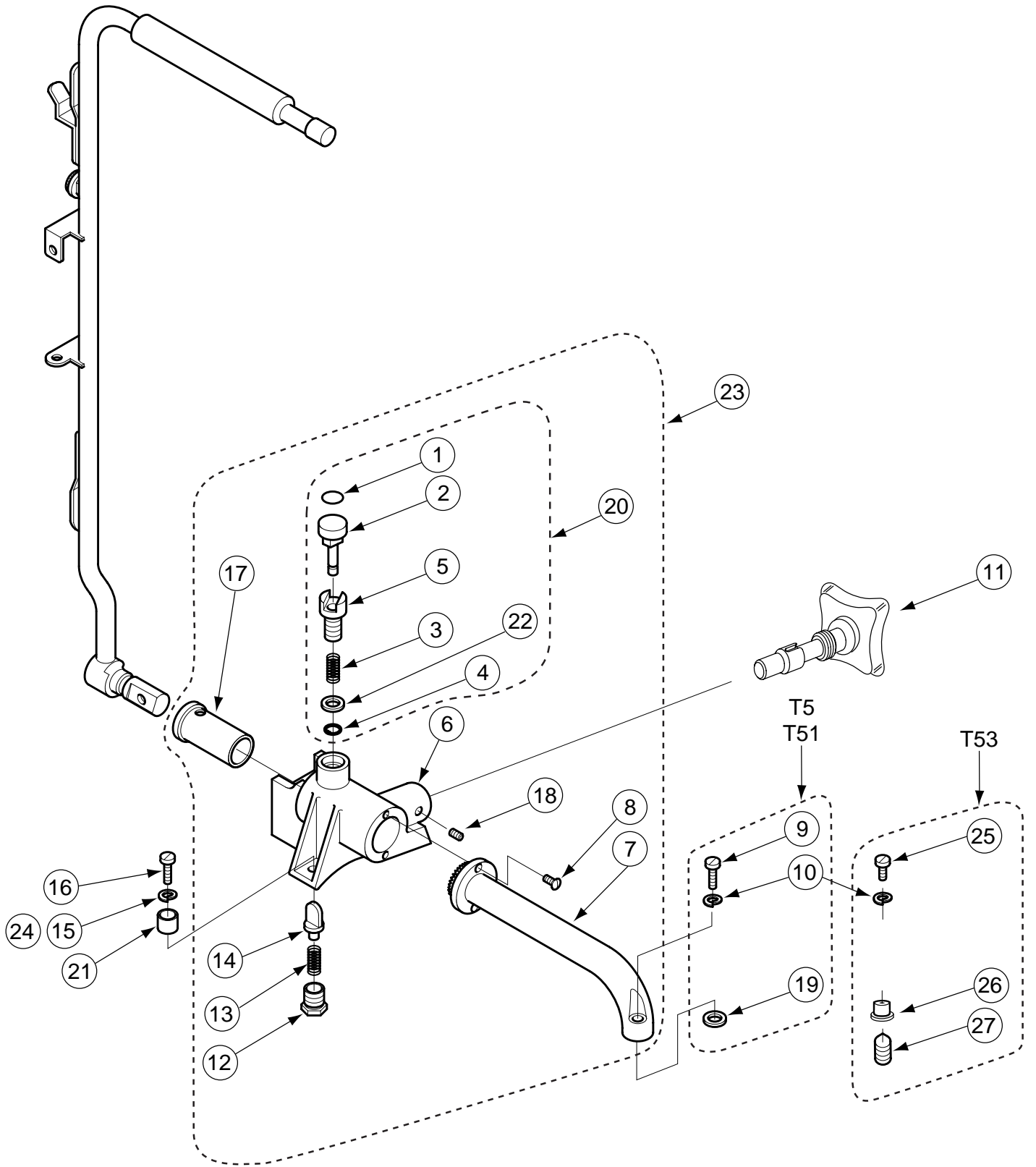
Note: In Canada, the use of a temporary adapter is not permitted by the Canadian Electrical Code.

Safety Instructions _____	2
Grounding Instructions _____	3
Operating Handle Assembly _____	6/7
Lifting Handle Assembly _____	8/9
Motor Case Assembly _____	10/11
Gear Case Assembly _____	12/13
Inner Gear Case Assembly _____	14/15
Motor Shroud Assembly _____	16/17
Nozzle/Inner Hood Assembly _____	18/19
Brush and Tray Assembly _____	20/21
Wiring Diagram - 100/120V _____	22
Wiring Diagram - 220/240V _____	23

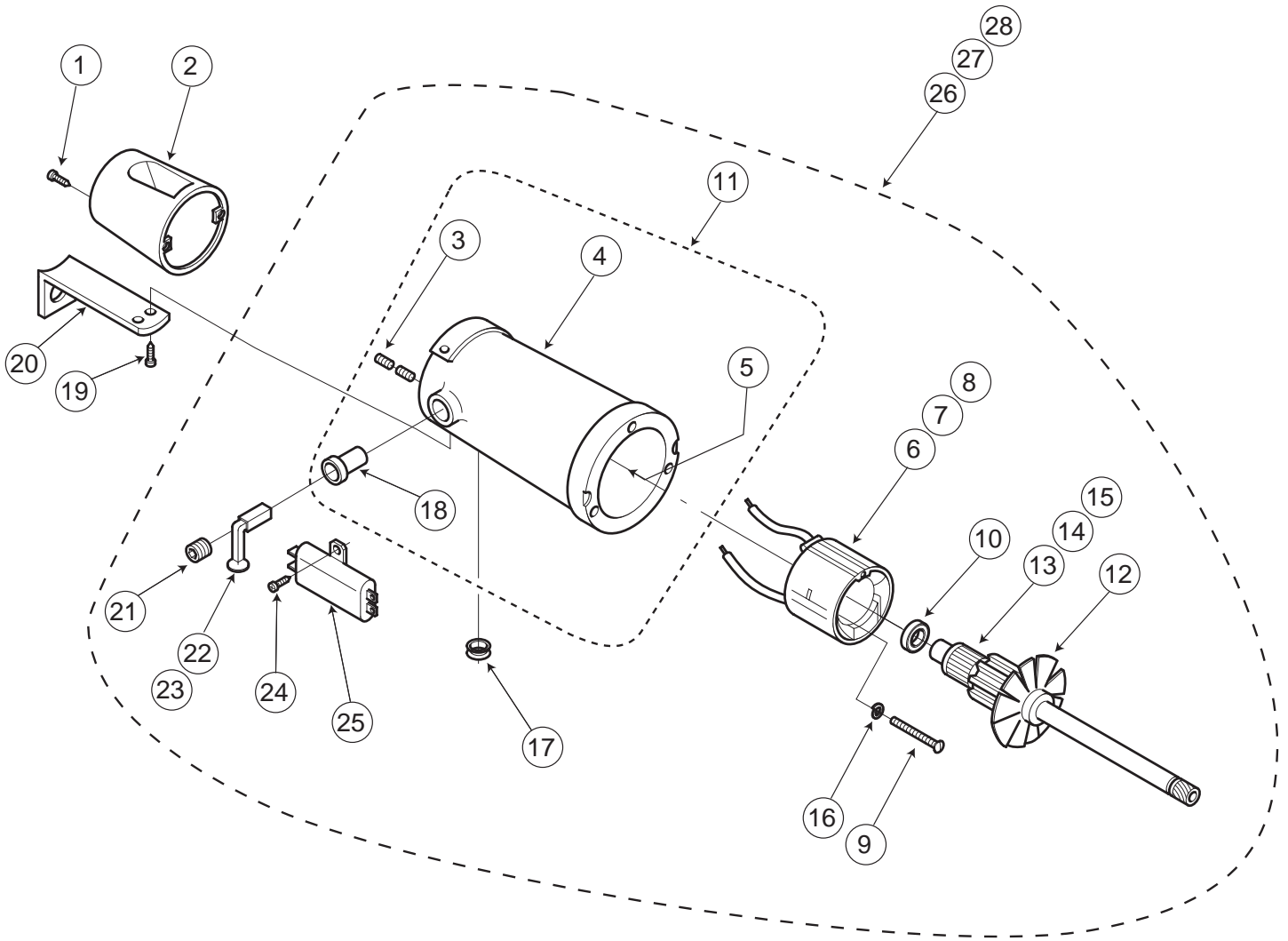




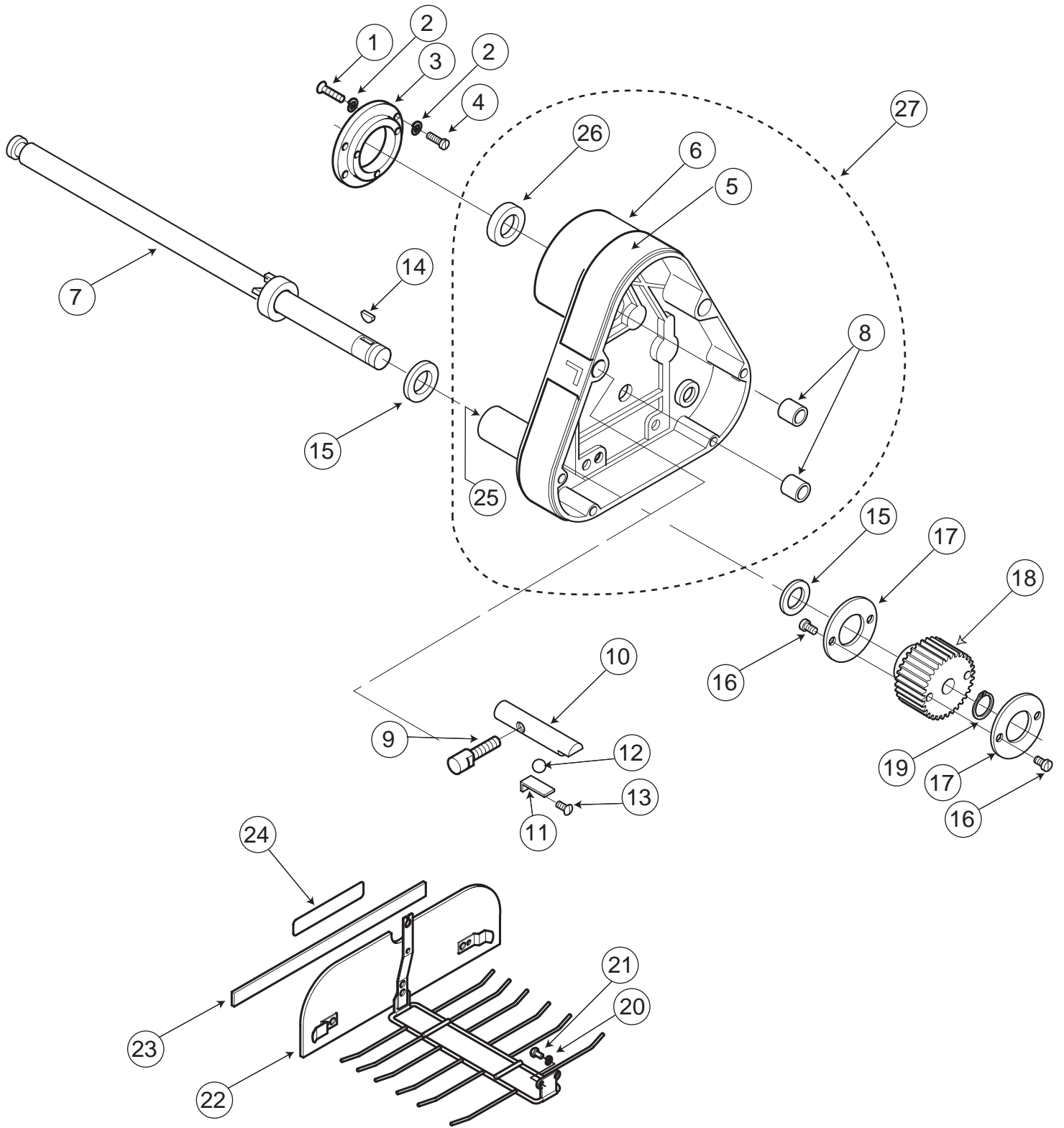
Code No.	Part No.	Description
1	V818	Button-Twin Lock
2	M7146	Spring
3	V817	Twin Connector
4	M30551	Handle-Pinned & Welded
5	M7020B	Cord Hook (2) Required
6	M7131	Cord Clip
7	M7053B	Screw 10-32 x 3/8" (4) Required
8	M30385	Vinyl Cap



Code No.	Part No.	Description
1	M30140	Decal-Handle Release
2	M30101	Plunger-Handle Release
3	M30117	Spring
4	M30104	Retaining Ring ¼" Shaft
5	M30100	Retainer-Handle Release
6	M30553	Handle Support
7	M30456	Lifting Handle Weldment
8	M30281	Screw 10-32 x ½" (2) Required
9	M6419A	Screw 10-32 x 1½" (T5 and T51 Only)
10	D277	Lockwasher #10
11	M30556	Lock Shaft Assembly
12	M30098	Retainer-Temporary Detent
13	M30102	Spring
14	M30182	Temporary Detent
15	603	Lockwasher ¼" (2) Required (T5 and T51 Only)
16	L5002	Screw 1/4-20 x ¾" (2) Required
17	M30452	Flange Bearing
18	M30555	Set Screw 8-32 x ¼"
19	M30525	Washer-Flat (T5 and T51 Only)
20	M30365	Handle Release Assembly (Includes Code Numbers 1, 2, 3, 4, 5, and 22)
21	M30378	Insulator Tube (2) Required
22	M30201	Washer - Flat
23	M30554	Lifting Handle ASM (Includes Code Numbers 6-8, 12-14, 17, 18, and 20)
<u>T53 ONLY</u>		
24	W529	Flat Nylon Washer (2) Required
25	M7053B	Screw 10-32 x ⅜"
26	M30377	Insulator
27	75	Set Screw 10-32 x ¾"

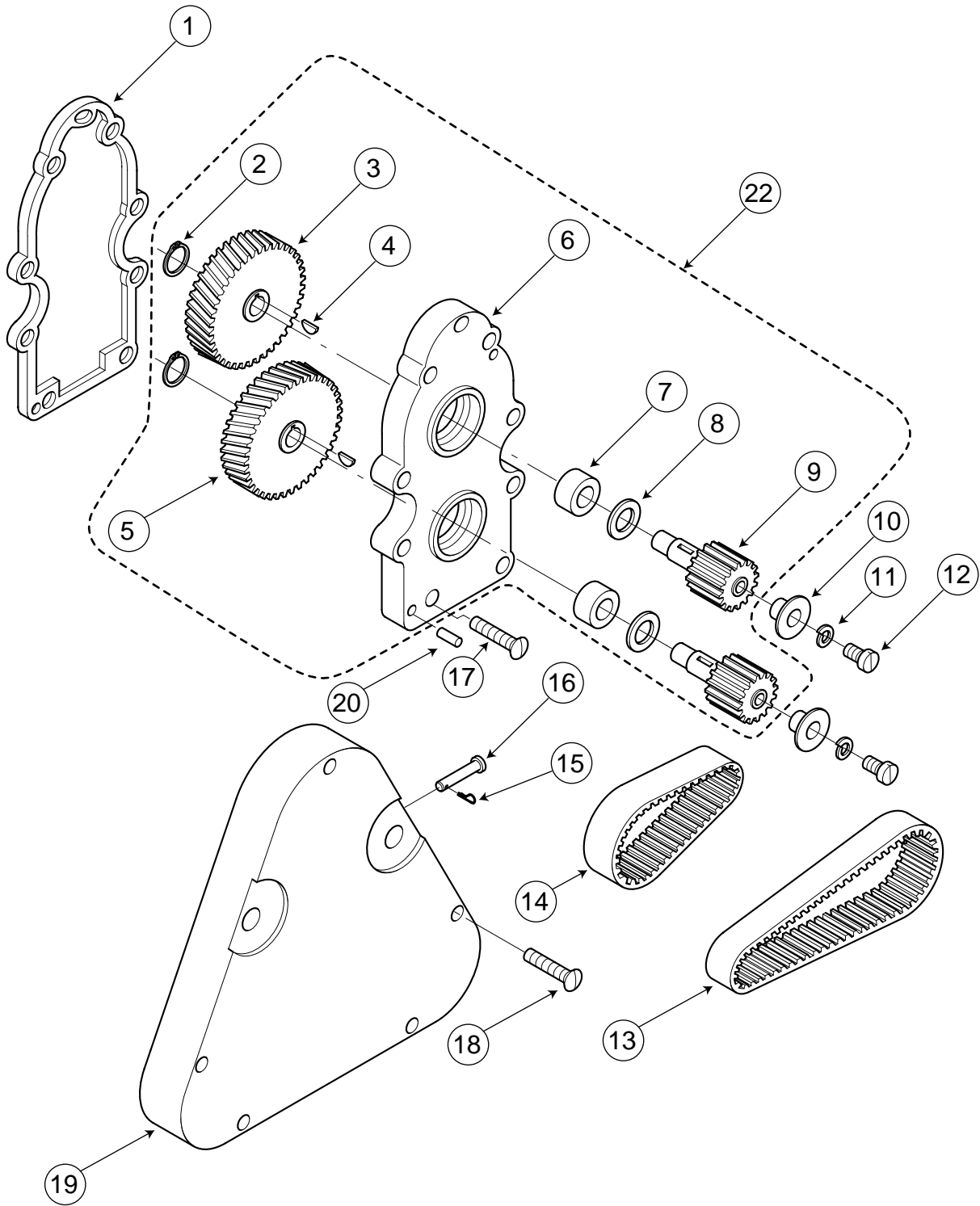


Code No.	Part No.	Description
1	H1072	Screw 8-32 x 1/2" (2) Required
2	M30062	Motor Exhaust Duct
3	D365	Set Screw 10-24 x 3/16" (4) Required
4	M30122	Motor Case
5	M50325	Tolerance Ring (Included in Code No. 4)
6	M30373	Field 100V (T53)
7	M6100NA	Field 120V (T5)
8	M30294	Field 220/240V (T51)
9	M6006B	Screw 8-32 x 3/8" (2) Required
10	M12002A	Bearing
11	M30537	Motor Case and Carbon Brush Holder Assembly (Includes Code # 3, 4, 5, and 18)
12	M30131	Fan-Armature (Included in Code # 13, 14, 15)
13	M30372	Armature 100V (Includes Code # 12)
14	M30132	Armature 120V (Includes Code # 12)
15	M30293	Armature 220/240V (Includes Code # 12)
16	M5005	Washer #8 (2) Required
17	M9008	Grommet (2) Required
18	M6013	Carbon Brush Holder (2) Required
19	M7053B	Screw 10-32 x 3/8" (2) Required
20	M30094	Support Bracket
21	VM16	Cap-Carbon Brush Holder (2) Required
22	M6602	Carbon Brush Assembly 100V/120V (2) Required
23	M6605	Carbon Brush Assembly 220/240V (2) Required
24	D174B	Screw 8-32 x 1/4"
25	M4222	RFI Filter (220/240V Only)
26	M30543	Motor Case/Armature/Field-100V (T53) (Includes Code Nos. 6, 9-12, 13, 16, 17, 21, 22, & 24) Note: Also includes (1) M30133 (Bearing) Code No. 26 on page 13
27	M30544	Motor Case/Armature/Field-120V (T5) (Includes Code Nos. 7, 9-12, 14, 16, 17, 21, 22, & 24) Note: Also includes (1) M30133 (Bearing) Code No. 26 on page 13
28	M30545	Motor Case/Armature/Field-220/240V (T51) (Includes Code Nos. 8, 9-12, 15, 16, 17, 21, 23, 24, & 25) Note: Also includes (1) M30133 (Bearing) Code No. 26 on page 13



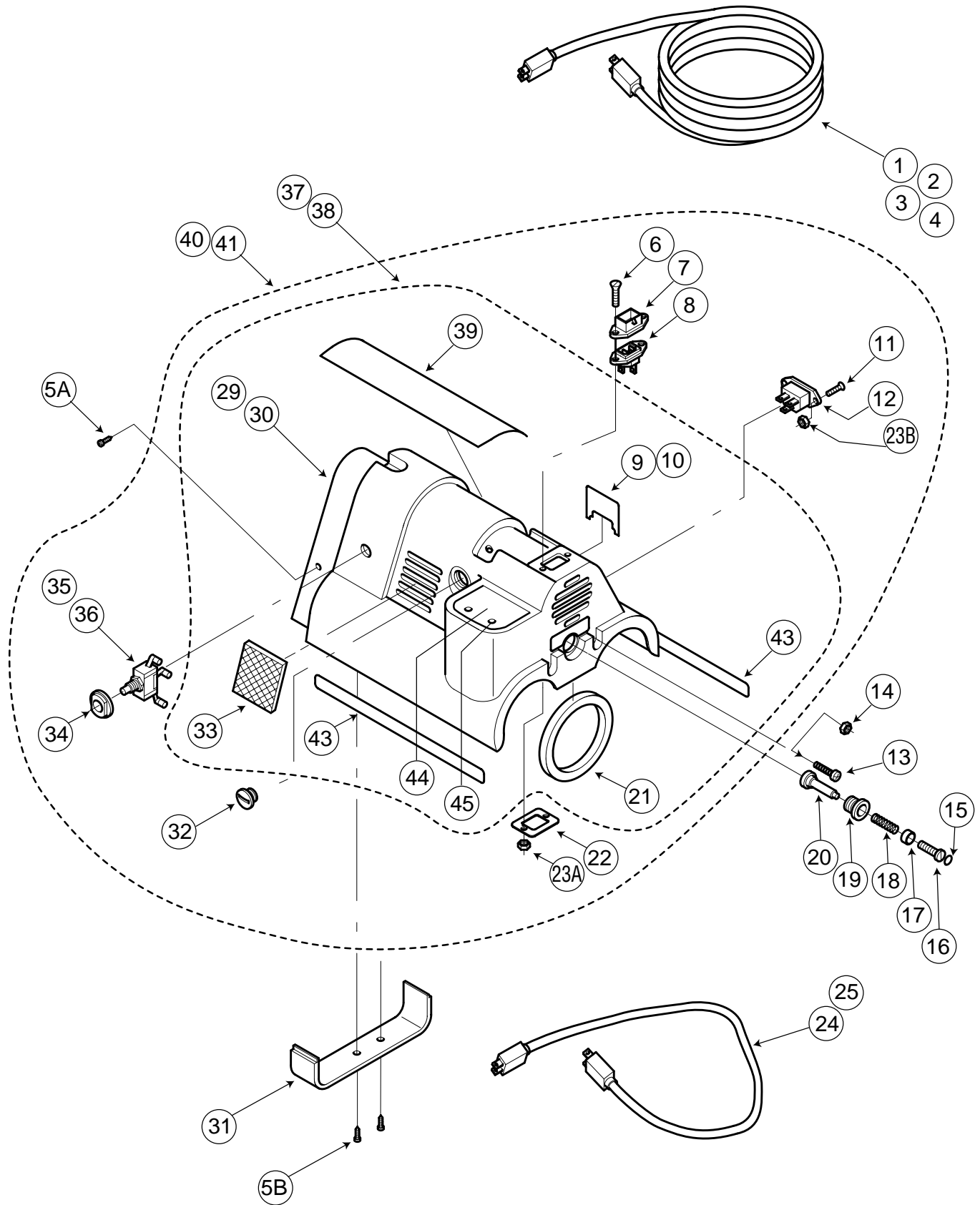
Code No.	Part No.	Description
1	M9019	Screw 10-24 x 1" (3) Required
2	D277	Lockwasher #10 (6) Required
3	M30115	Mounting Flange
4	F2771	Screw 10-32 x ½" (3) Required
5	M30361	Gasket-Outer Gearcase
6	M30157	Gearcase Assembly
7	M30541	Brush Shaft / Collar / Pin Assembly
8	M6003A	Bearing (2) Required
9	M30085	Twin Lock Lever
10	M11004	Twin Lock
11	M11007A	Spring - Ball-Detent
12	W242	Ball-Detent
13	M11008	Screw 6-32 x ⅝"
14	34A	Woodruff Key (2) Required
15	M2005	Washer-Nylon (4) Required
16	VM56A	Screw 6-32 x ⅝" Self-Tapping (8) Required
17	M2009A	Pulley Flange (4) Required
18	M2006C	Belt Pulley (2) Required
19	M2008	Retaining Ring ½" Shaft (2) Required
20	D277	Lockwasher #10 (2) Required
21	V115	Screw 10-24 x ⅝" (2) Required
22	M30069	Brush Guard Assembly (Includes Code # 23)
23	M30136	Hook Fastener
24	M30142	Decal-Warning
25	*M11109A	Needle Bearing (For Brush Shafts) (4) Required
26	M30133	Bearing
27	M30542	Outer Gearcase & Bearing Assembly (Includes Code # 5, 6, 8, 25 and 26)

* Not Illustrated



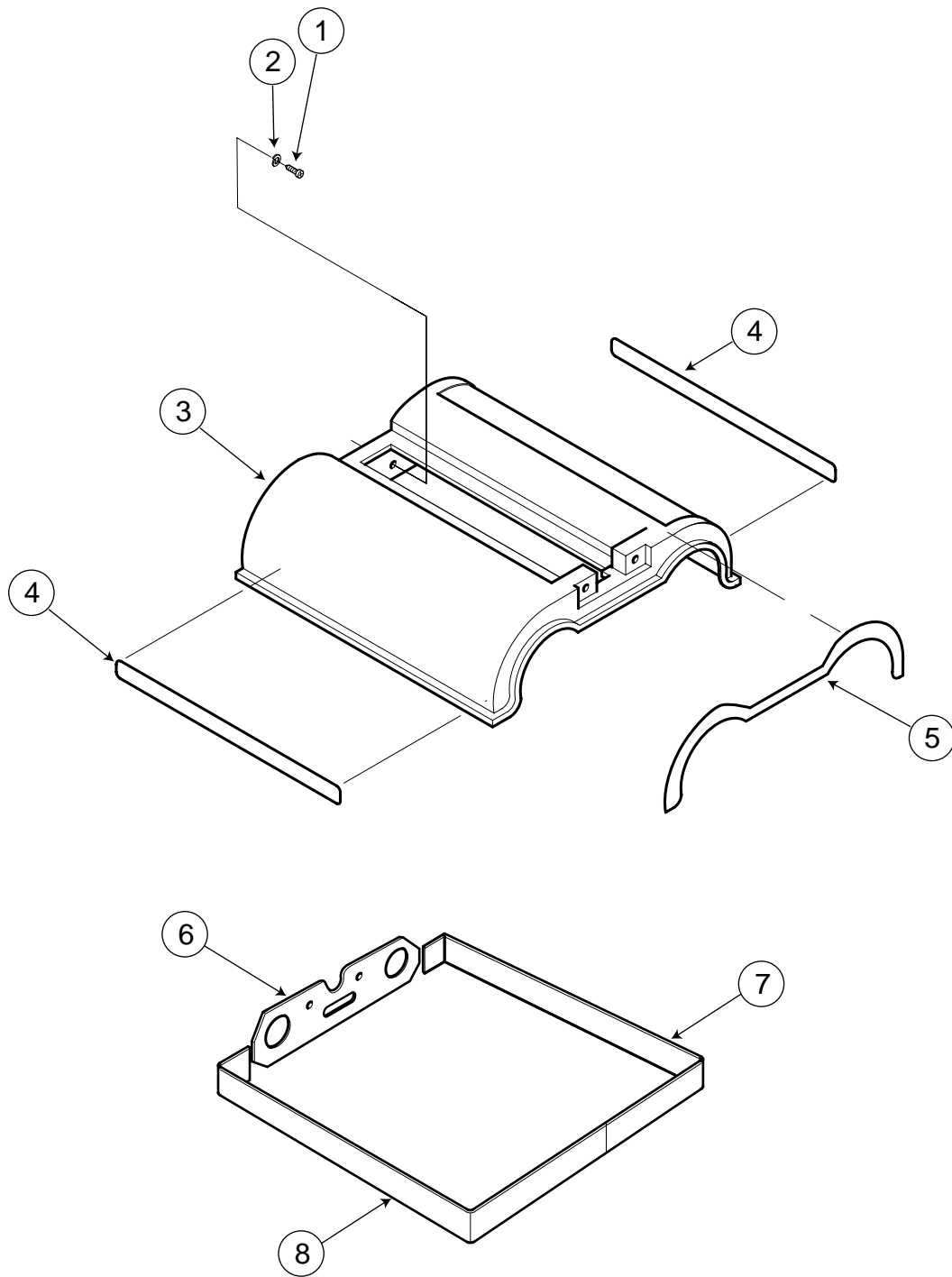
Code No.	Part No.	Description
1	M12010	Gasket
2	U1423	Retaining Ring $\frac{3}{8}$ " Shaft (2) Required
3	M12042	Gear-Left Hand
4	U1605A	Woodruff Key (2) Required
5	M12043	Gear-Right Hand
6	M12018	Inner Gear Case
7	M9002	Bearing (2) Required
8	M12019	Pulley Flange (2) Required
9	M12044	Pulley Shaft (2) Required
10	M12008A	Pulley Cap (2) Required
11	D277	Lockwasher #10 (2) Required
12	F2771	Screw 10-32 x $\frac{1}{2}$ " (2) Required
13	M12015B	Belt-Long
14	M12014B	Belt-Short
15	M13018	Hairpin Cotter
16	M30178	Clevis Pin $\frac{3}{16}$ " dia. x $\frac{1}{4}$ "
17	M12011A	Screw 10-32 x $\frac{13}{16}$ " (9) Required
18	M13015	Screw 6-32 x $\frac{1}{4}$ " (5) Required
19	M30066	Gearcase Cover
20	M12013	Dowel Pin $\frac{1}{8}$ " dia. x $\frac{3}{4}$ " (2) Required
21	*M12012	Grease-Lithium Base
22	M12040	Inner Gearcase Assembly

* Not Illustrated

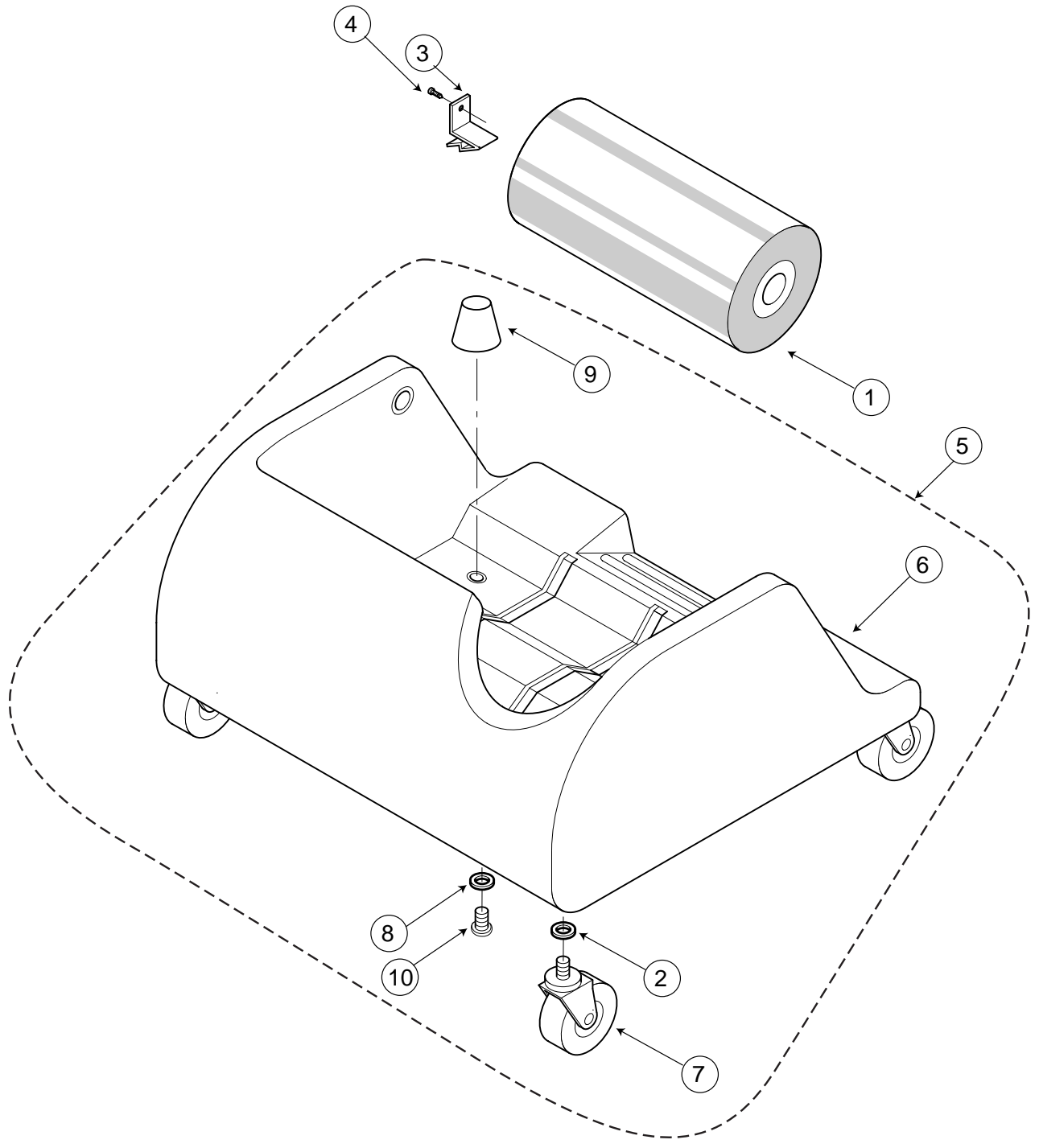


Code No.	Part No.	Description
1	M30116	Supply Cord-North American
2	M40401	Supply Cord-European
3	M40402	Supply Cord-UK
4	M40403	Supply Cord-Swiss
5	M30145	Screw 8-32 x 1/2" Thread Forming (7) Required 5A (2) Required - Motor Shroud to Outer Gearcase 5B (2) Required - Bottom Cover to Outer Gearcase
6	U534	Screw 6-32 x 5/8" (2) Required
7	M30089	Cord Lock
8	M4256	Cord Inlet Connector
9	M30143	Decal-Accessory Receptacle (T5/T53)
10	M30288	Decal-Twinning Receptacle (T51)
11	F4112	Screw 6-32 x 5/8" (2) Required
12	M30090	Accessory Receptacle
13	H1072	Screw 8-32 x 1/2" (2) Required (Inner Hood to Motor Shroud)
14	466A	Nut 8-32 (2) Required - Hood to Gearcase
15	M30139	Decal-Brush Guard Release
16	M30362	Screw 6-32 x 1/2"
17	M30075	Button-Brush Guard Release
18	M30077	Spring
19	M30074	Housing-Brush Guard Release
20	M30076	Shaft-Brush Guard Release
21	M30093	Gasket-Motor Exhaust
22	M30071	Backing Plate
23	F1129	Nut - 6-32 (4) Required 23A (2) Required - Cord Lock to Motor Shroud 23B (2) Required - Accessory Receptacle to Motor Shroud
24	M30124	Dual Machine Twinning Cord-100/120v (T5/T53)
25	M30125	Dual Machine Twinning Cord-220/240v (T51)
26	* MISC	Wire Assemblies (See Wiring Diagram)
27	* M30367	Decal - Switch 220/240v (T51)
28	* M30382	Circuit Breaker 220/240v (T51)
29	M30065	Motor Shroud
30	M30369	Motor Shroud (With Hole for Circuit Breaker) (T51)
31	M30105	Bottom Cover
32	M30086	Cap-Carbon Brush Access (2) Required
33	M30083	Intake Air Filter (2) Required
34	M30072	Nut-Switch (2) Required
35	M30092	Switch-On/Off-120v (2) Required (T5/T53)
36	M30088	Switch-On/Off-220/240v (2) Required (T51)
37	M30464	Motor Shroud Assembly 100/120v (T5/T53) (Includes Code # 9, 21, 29, 33, 39, 43, 44 and 45)
38	M30463	Motor Shroud Assembly 220/240v (T51) (Includes Code # 10, 21, 27, 30, 33, 39 and 42-45)
39	M30494	Decal-Host Machine
40	M30533	Motor Shroud Assembly with Switches-100/120v (T5/T53) (Includes Code # 6, 7, 8, 11, 12, 22, 23A, 23B, 32,34, 35 and 37)
41	M30534	Motor Shroud Assembly with Switches-220/240v (T51) (Includes Code # 6, 7, 8, 11, 12, 22, 23A, 23B, 27, 28, 32,34, 36 and 38)
42	* M30368	Decal - Circuit Breaker 220/240v (2) Required (T51)
43	M30135	Hook Fastener (2) Required
44	M30495	Cover Plate
45	M30499	Plastic Rivet (2) Required

* Not Illustrated



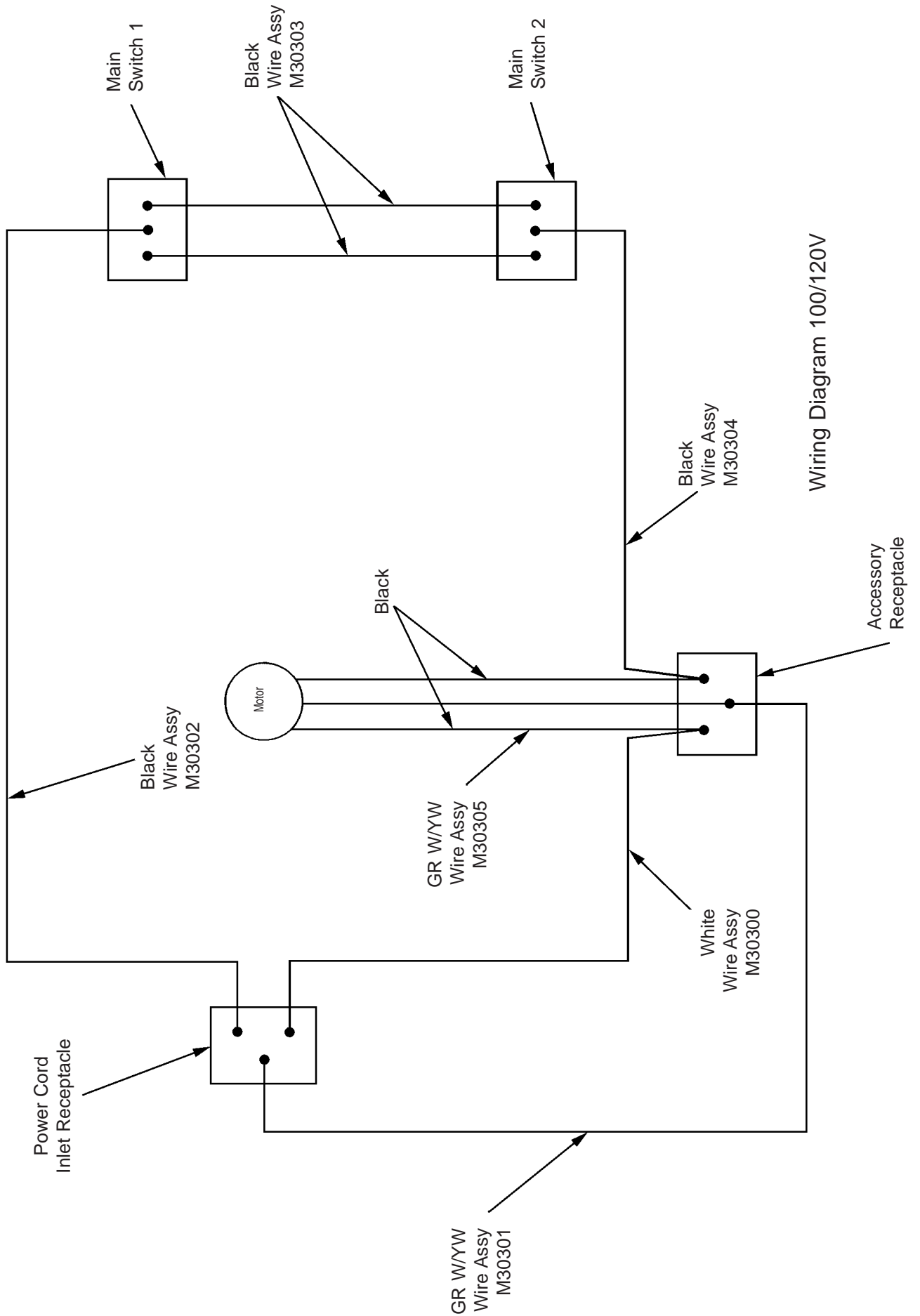
Code No.	Part No.	Description
1	V113	Screw 10-24 x $\frac{5}{16}$ " (2) Required (Hood to Gearcase)
2	U1018	Washer #10 (2) Required
3	M30473	Inner Hood
4	M30284	Gasket-Inner Hood, Side (2) Required
5	M30283	Gasket-Inner Hood, End (1) Required
6	M30392	Skirt - End piece
7	M30393	Skirt - Short
8	M30394	Skirt - Long

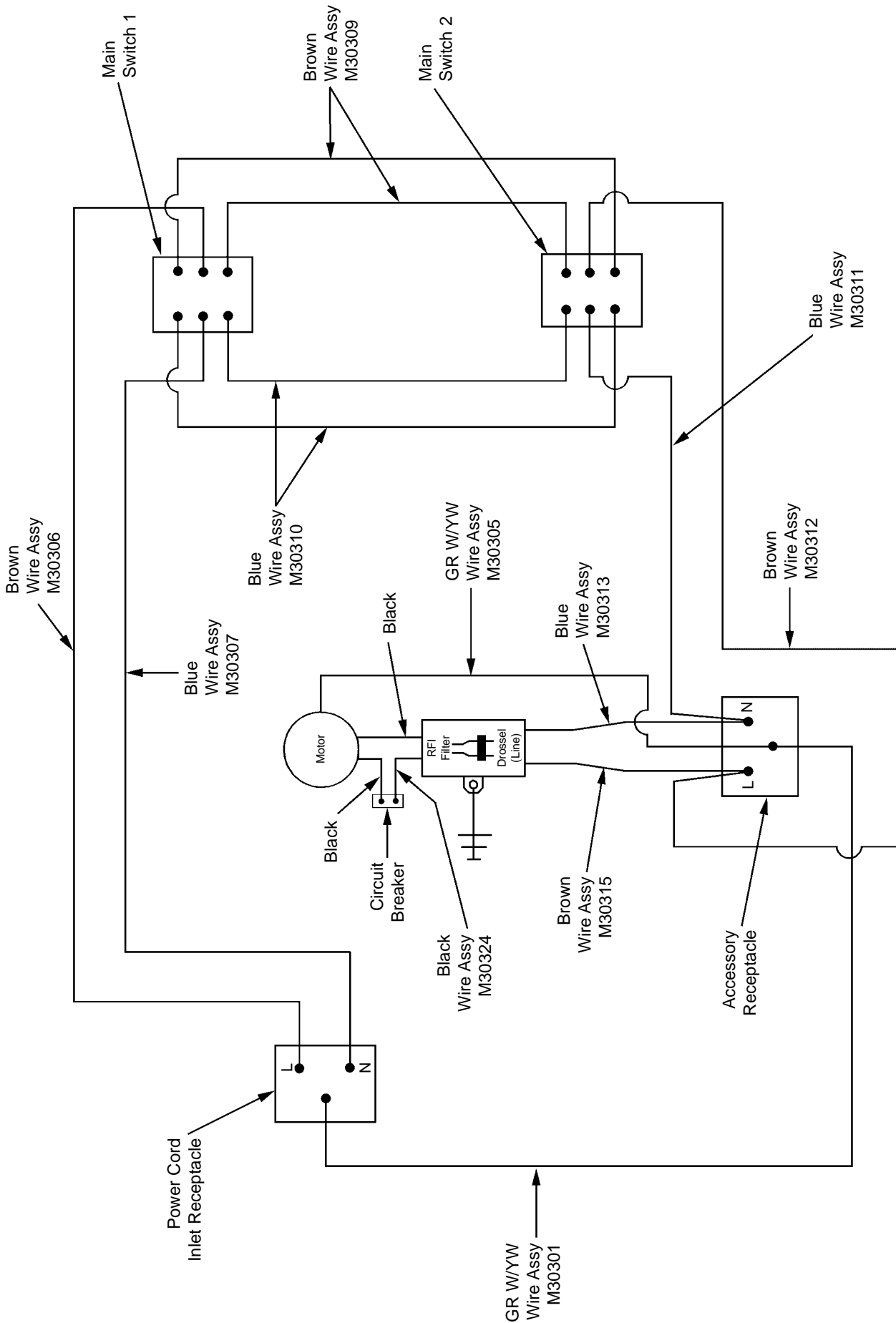


<u>Code Number</u>	<u>Item Number</u>	<u>Description</u>
1	See Below	Brush - Contact your Distributor for various brush options (2) Required
2	M30512	Washer - Flat (4) Required
3	M1014	Spring Clip (1) Required Per Brush
4	V703A	Screw #4 x 3/8" Self-Tapping (1) Required Per Brush
5	M40300	Tray Complete (Includes Code Nos. 2, 6-10)
6	M30011	Tray
7	M30034	Caster (4) Required
8	M30073	Washer-Flat (2) Required
9	M30211	Tray Standoff (2) Required
10	M6419A	Screw 10-32 x 1/4" (2) Required

Carton with (2) Brushes

<u>Item Number</u>	<u>Description</u>	<u>Type</u>
M1018	Brush Asm., Gold	(Soft)
M1019	Brush Asm., Gold/White	(Med. Soft)
M1020	Brush Asm., White	(Standard)
M1021	Brush Asm., White/Black	(Med. Stiff)
M1022	Brush Asm., Black	(Stiff)





Wiring Diagram 220/240V

© 1998, 2003.
Racine Industries, Inc.
1405 Sixteenth Street
P.O. Box 1648
Racine, WI 53401 USA

 1-262-637-4491
 1-800-558-9439
FAX 1-262-637-0558
www.hostcarpetcleaning.com

host[®]
The Dry Extraction
Carpet Cleaning System