

host[®]

The Dry Extraction
Carpet Cleaning System



T7/T71/T73 M40000/M40001/M40003

REPAIR PARTS CATALOG NO. M30202(K)
For machines starting with Serial No. T6183

ISSUED September 2003

ORDERS

Please use part numbers when ordering and include the serial number of the machine (stamped on the electrical data plate) to insure that you will receive the correct parts.

Order from your HOST Distributor.

***SAVE THESE INSTRUCTIONS
READ ALL INSTRUCTIONS BEFORE USING THIS APPLIANCE***

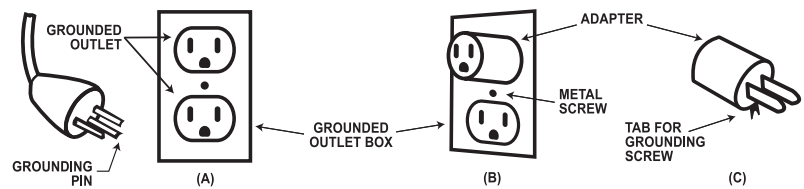
WHEN USING AN ELECTRICAL APPLIANCE, BASIC PRECAUTIONS SHOULD ALWAYS BE FOLLOWED, INCLUDING THE FOLLOWING:

WARNING – TO REDUCE THE RISK OF FIRE, ELECTRIC SHOCK, OR INJURY

1. Do not leave appliance when plugged in. Unplug from outlet when not in use and before servicing.
2. Do not use outdoors or on wet surfaces.
3. Do not allow to be used as a toy. Close attention is necessary when used by or near children.
4. Use only as described in this manual. Use only manufacturer's recommended attachments.
5. Inspect cord for damage before each use. Do not use with damaged cord or plug. If appliance is not working as it should, has been dropped, damaged, left outdoors, or dropped into water, return it to a service center.
6. Do not pull or carry by cord, use cord as a handle, close a door on cord, or pull cord around sharp edges or corners. Do not run appliance over cord. Keep cord away from heated surfaces.
7. Do not unplug by pulling on cord. To unplug, grasp the plug, not the cord.
8. Do not handle plug or appliance with wet hands.
9. Do not put any object into openings. Do not use with any opening blocked; keep free of dust, lint, hair, and anything that may reduce air flow.
10. Keep hair, loose clothing, fingers, and all parts of body away from openings and moving parts.
11. Turn off all controls before unplugging.
12. Use extra care when cleaning on stairs.
13. Do not use to pick up flammable or combustible liquids such as gasoline or use in areas where they may be present.
14. Do not pick up anything that is burning or smoking, such as cigarettes, matches, or hot ashes.
15. Do not use without filters in place.
16. Connect to a properly grounded outlet only. See Grounding Instructions.
17. Always turn off this appliance before connecting or disconnecting either HOST extractorVAC™ or HOST machine.
18. Accessory receptacle is for HOST extractorVAC or dual machine operation only.
19. This appliance is to be used with HOST® carpet cleaning products only. Use of other cleaning products may damage this appliance.
20. Do not use for picking up health endangering dust such as asbestos.
21. This is a commercial appliance, not intended for household use.

Grounding Methods

This appliance must be grounded. If it should malfunction or break down, grounding provides a path of least resistance for electric current to reduce the risk of electric shock. This appliance is equipped with a cord having an equipment-grounding conductor and grounding plug. The plug must be inserted into an appropriate outlet that is properly installed and grounded in accordance with all local codes and ordinances.



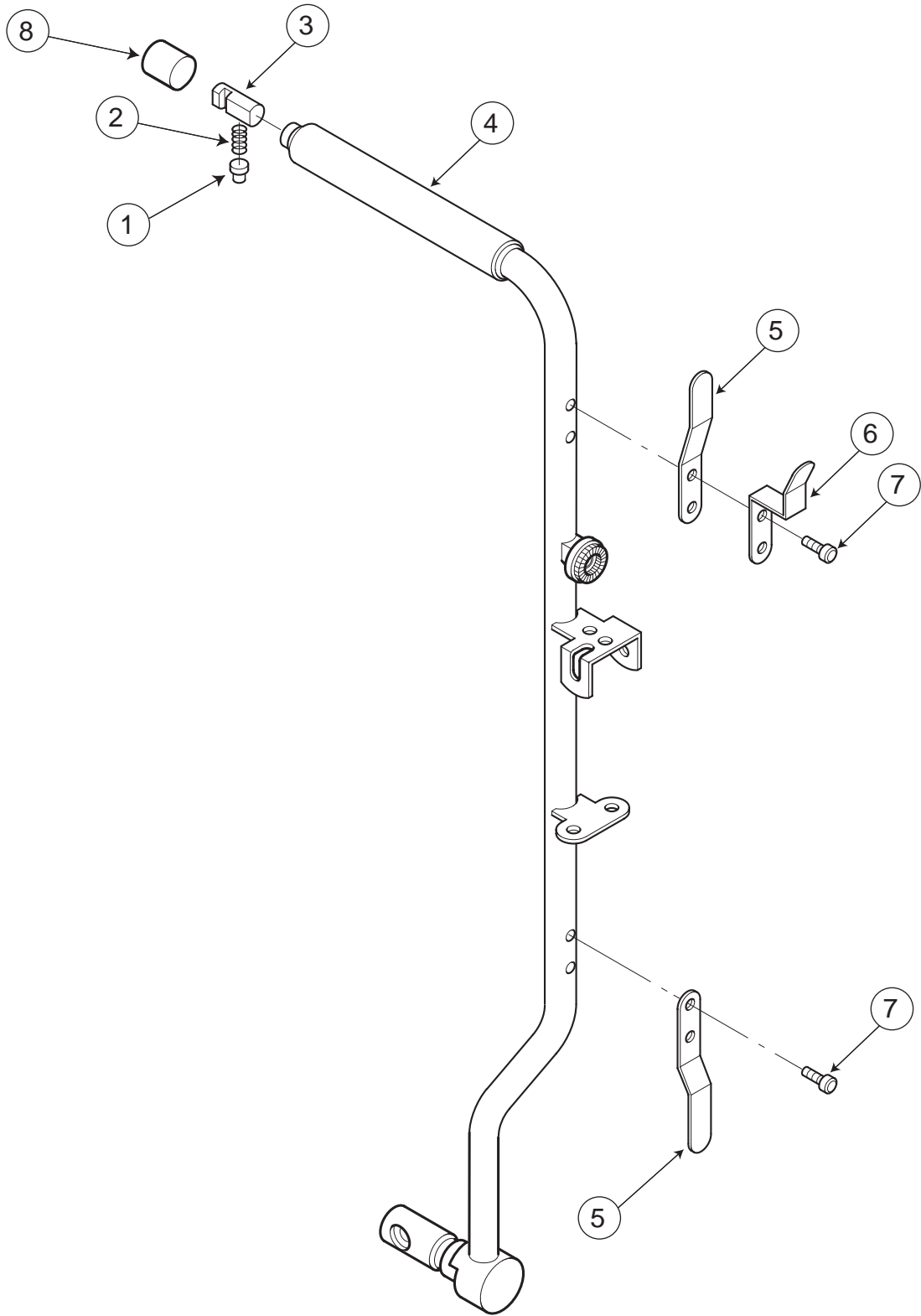
WARNING: Improper connection of the equipment-grounding conductor can result in the risk of electric shock. Check with a qualified electrician or service person if you are in doubt as to whether the outlet is properly grounded. Do not modify the plug provided with the appliance. If it will not fit the outlet, have a proper outlet installed by a qualified electrician.

This appliance is for use on a nominal 120 volt circuit, and has a grounded plug that looks like the plug illustrated in sketch A. A temporary adapter that looks like the adapter illustrated in sketches B and C may be used to connect this plug to a 2-pole receptacle as shown in sketch B if a properly grounded outlet is not available. The temporary adapter should be used only until a properly grounded outlet (sketch A) can be installed by a qualified electrician. The green colored rigid ear, lug, or the like extending from the adapter must be connected to a permanent ground outlet box cover. Whenever the adapter is used, it must be held in place by a metal screw.

Note: In Canada, the use of a temporary adapter is not permitted by the Canadian Electrical Code.

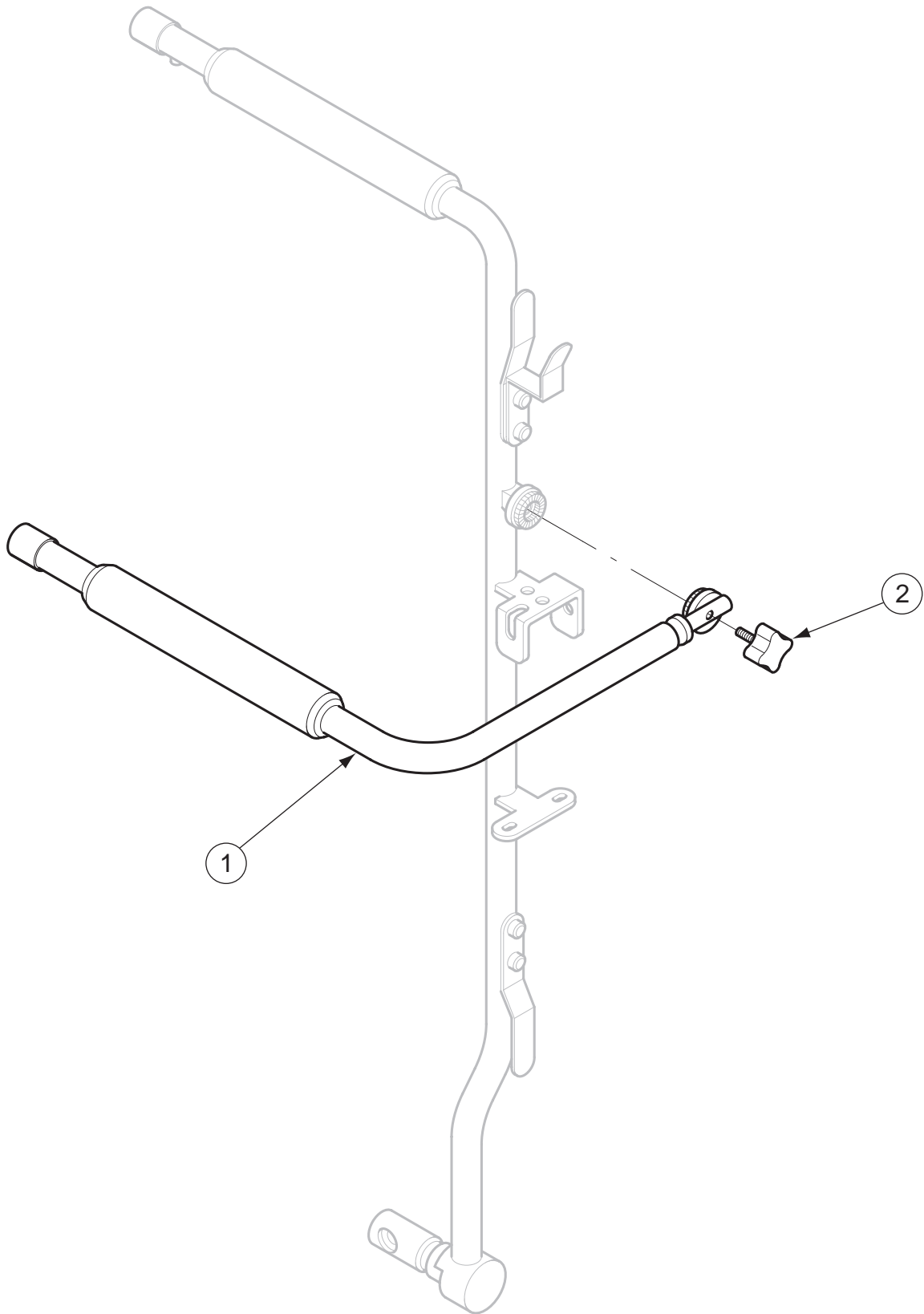
Safety Instructions _____	2
Grounding Instructions _____	3
Section I - T7/T71/T73 Parts _____	5
Operating Handle Assembly - M30481 _____	6
Secondary Handle Assembly _____	8
Lifting Handle Assembly _____	10
Motor Case Assembly _____	12
Outer Gearcase Assembly _____	14
Inner Gearcase Assembly _____	16
Hood Assembly _____	18
Brush and Tray Assembly _____	20
Wiring Diagram - 100/120V _____	22
Wiring Diagram - 220/240V _____	23
Section II - M40000/M40001/M40003 VAC Parts _____	25
Vac Assembly _____	26
Vac Motor Assembly _____	28
Wiring Diagram - 100/120V _____	30
Wiring Diagram - 220/240V _____	31





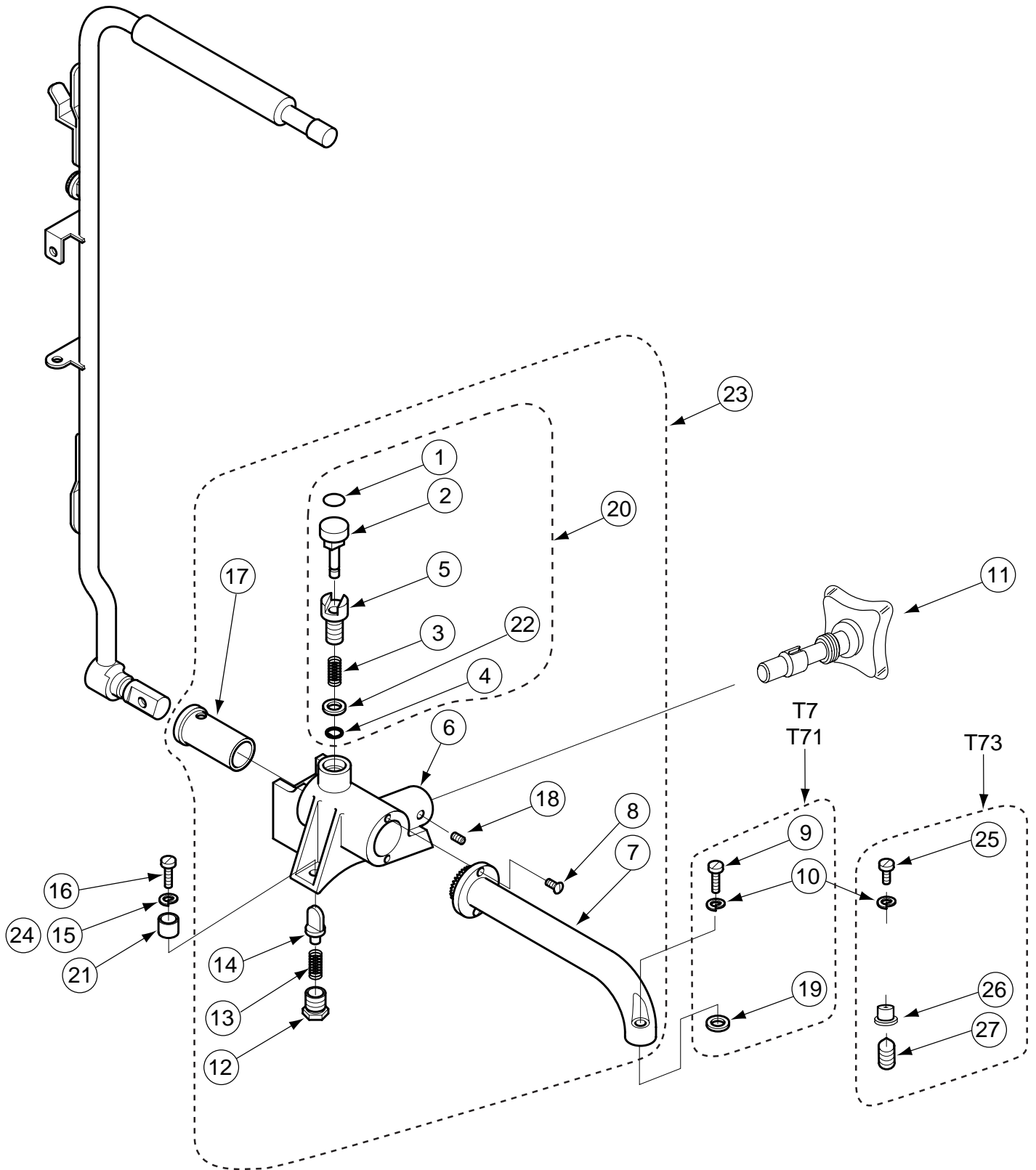
**FOR MACHINES STARTING WITH SERIAL NO. 6183
ISSUED MARCH 7, 2003**

Code No.	Part No.	Description
1	V818	Button-Twin Lock
2	M7146	Spring
3	V817	Twin Connector
4	M30551	Handle-Pinned & Welded
5	M7020B	Cord Hook (2) Required
6	M7131	Cord Clip
7	M7053B	Screw 10-32 x 3/8" (4) Required
8	M30385	Vinyl Cap



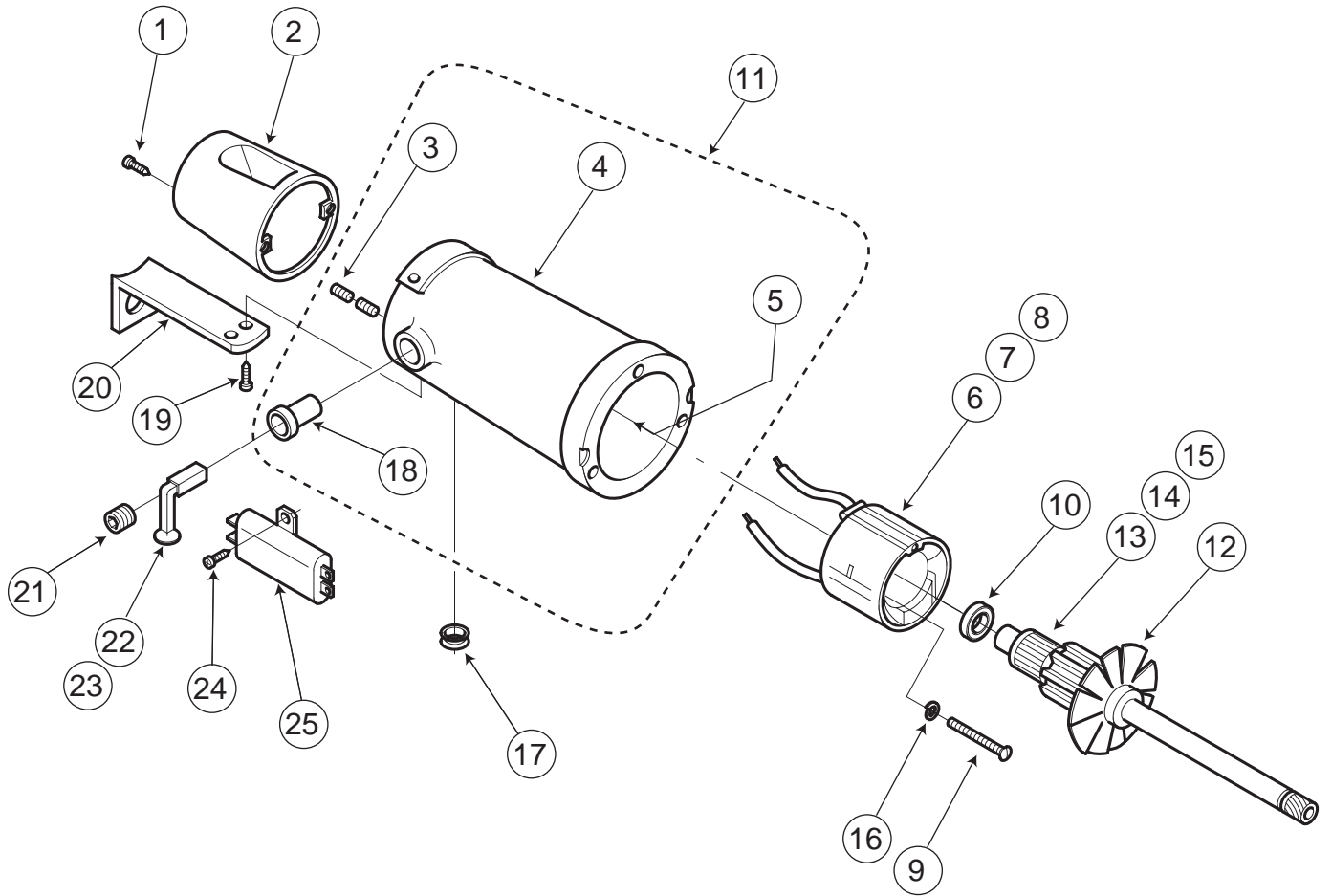
Code No.	Part No.	Description
1	M30476	Accessory Handle
2	M30478	Knob/Shaft Assembly

FOR MACHINES STARTING WITH SERIAL NO. 6183
ISSUED MARCH 7, 2003



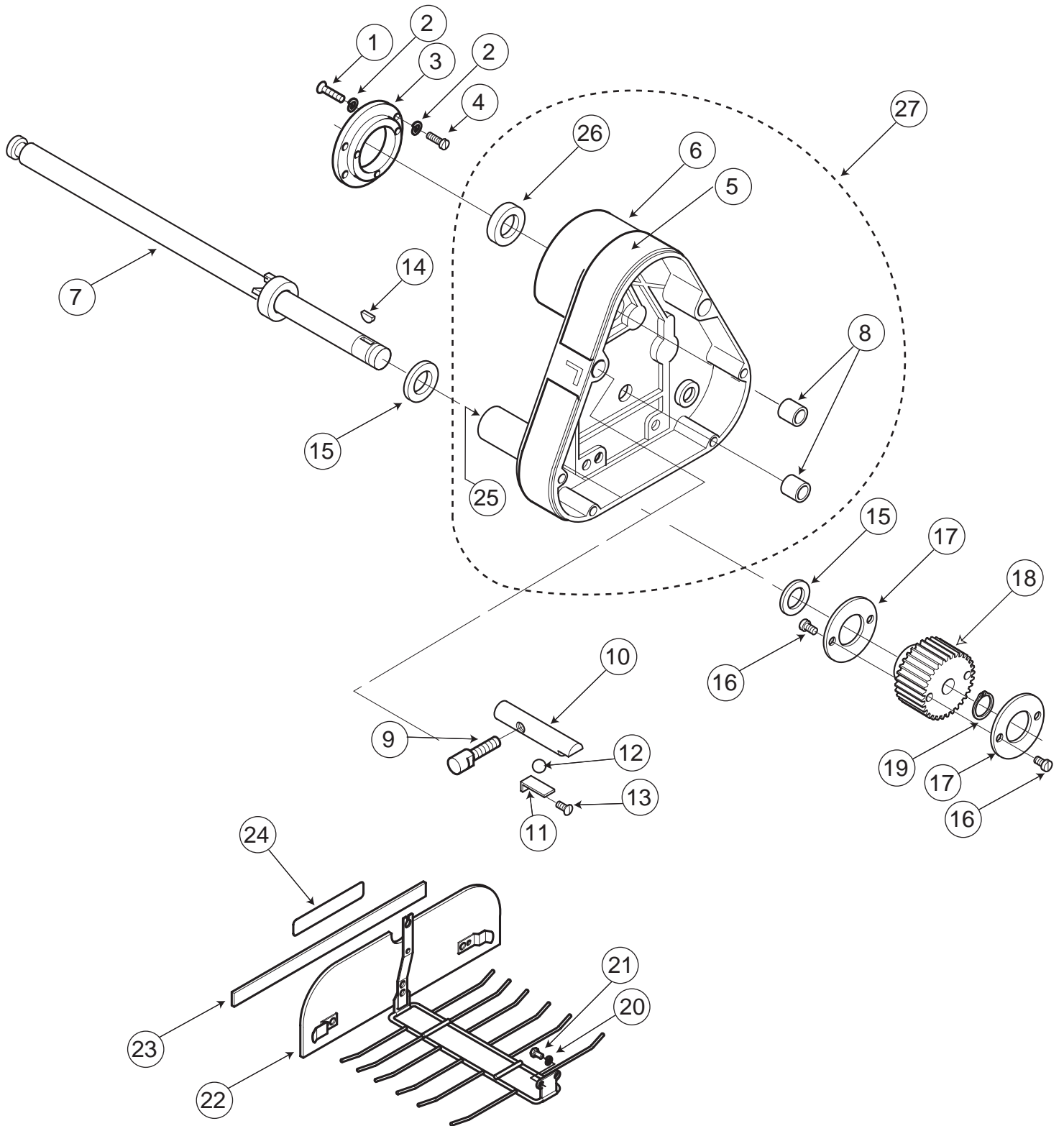
**FOR MACHINES STARTING WITH SERIAL NO. 6183
ISSUED MARCH 7, 2003**

Code No.	Part No.	Description
1	M30140	Decal-Handle Release
2	M30101	Plunger-Handle Release
3	M30117	Spring
4	M30104	Retaining Ring ¼" Shaft
5	M30100	Retainer-Handle Release
6	M30553	Handle Support
7	M30456	Lifting Handle Weldment
8	M30281	Screw 10-32 x ½" (2) Required
9	M6419A	Screw 10-32 x 1½" (T7 and T71 Only)
10	D277	Lockwasher #10
11	M30556	Lock Shaft Assembly
12	M30098	Retainer-Temporary Detent
13	M30102	Spring
14	M30182	Temporary Detent
15	603	Lockwasher ¼" (2) Required (T7 and T71 Only)
16	L5002	Screw 1/4-20 x ¾" (2) Required
17	M30452	Flange Bearing
18	M30555	Set Screw 8-32 x ¼"
19	M30525	Washer-Flat (T7 and T71 Only)
20	M30365	Handle Release Assembly (Includes Code Numbers 1, 2, 3, 4, 5 and 22)
21	M30378	Insulator Tube (2) Required
22	M30201	Washer - Flat
23	M30554	Lifting Handle ASM (Includes Code Numbers 6-8, 12-14, 17, 18 and 20)
<u>T73 ONLY</u>		
24	W529	Flat Nylon Washer (2) Required
25	M7053B	Screw 10-32 x ⅜"
26	M30377	Insulator
27	75	Set Screw 10-32 x ¾"



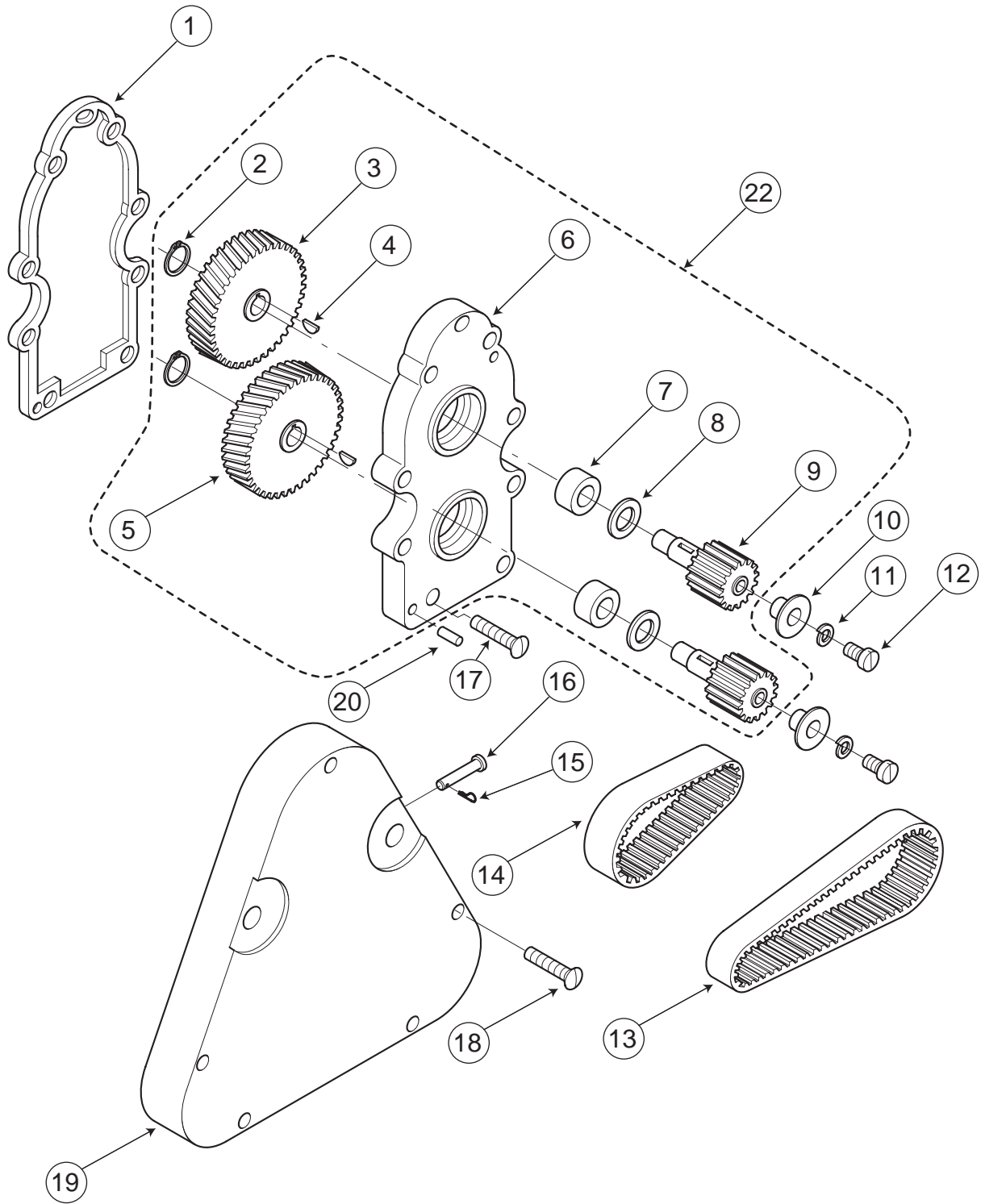
Code No.	Part No.	Description
1	H1072	Screw 8-32 x 1/2" (2) Required
2	M30062	Motor Exhaust Duct
3	D365	Set Screw 10-24 x 3/16" (4) Required
4	M30122	Motor Case
5	M50325	Tolerance Ring (Included in Code No. 4)
6	M30373	Field 100V (T73)
7	M6100NA	Field 120V (T7)
8	M30294	Field 220/240V (T71)
9	M6006B	Screw 8-32 x 3/8" (2) Required
10	M12002A	Bearing
11	M30537	Motor Case and Carbon Brush Holder Assembly (Includes Code # 3, 4, 5, and 18)
12	M30131	Fan-Armature (Included in Code # 13, 14, 15)
13	M30372	Armature 100V (Includes Code # 12)
14	M30132	Armature 120V (Includes Code # 12)
15	M30293	Armature 220/240V (Includes Code # 12)
16	M5005	Washer #8 (2) Required
17	M9008	Grommet (2) Required
18	M6013	Carbon Brush Holder (2) Required
19	M7053B	Screw 10-32 x 3/8" (2) Required
20	M30094	Support Bracket
21	VM16	Cap-Carbon Brush Holder (2) Required
22	M50232	Carbon Brush Assembly 100V/120V (2) Required
23	M6605	Carbon Brush Assembly 220/240V (2) Required
24	D174B	Screw 8-32 x 1/4"
25	M4222	RFI Filter (220/240V Only)

Optional Machine Type



Code No.	Part No.	Description
1	M9019	Screw 10-24 x 1" (3) Required
2	D277	Lockwasher #10 (6) Required
3	M30115	Mounting Flange
4	F2771	Screw 10-32 x ½" (3) Required
5	M30361	Gasket-Outer Gearcase
6	M30157	Gearcase Assembly
7	M30541	Brush Shaft / Collar / Pin Assembly
8	M6003A	Bearing (2) Required
9	M30085	Twin Lock Lever
10	M11004	Twin Lock
11	M11007A	Spring - Ball-Detent
12	W242	Ball-Detent
13	M11008	Screw 6-32 x ⅝"
14	34A	Woodruff Key (2) Required
15	M2005	Washer-Nylon (4) Required
16	VM56A	Screw 6-32 x ⅝" Self-Tapping (8) Required
17	M2009A	Pulley Flange (4) Required
18	M2006C	Belt Pulley (2) Required
19	M2008	Retaining Ring ½" Shaft (2) Required
20	D277	Lockwasher #10 (2) Required
21	V115	Screw 10-24 x ⅝" (2) Required
22	M30069	Brush Guard Assembly (Includes Code # 23)
23	M30136	Hook Fastener
24	M30142	Decal-Warning
25	*M11109A	Needle Bearing (For Brush Shafts) (4) Required
26	M30133	Bearing
27	M30542	Outer Gearcase & Bearing Assembly (Includes Code # 5, 6, 8, 25 and 26)

* Not Illustrated

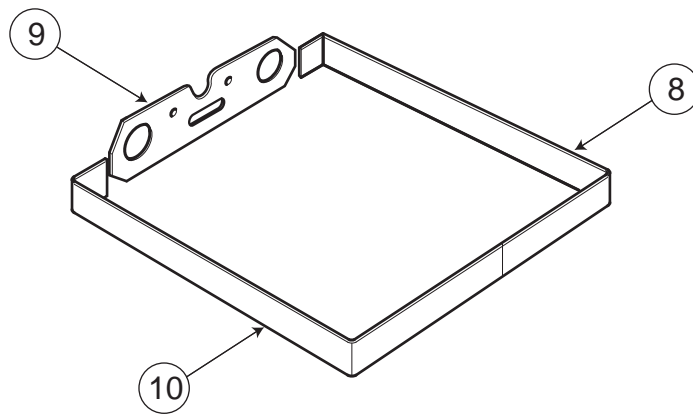
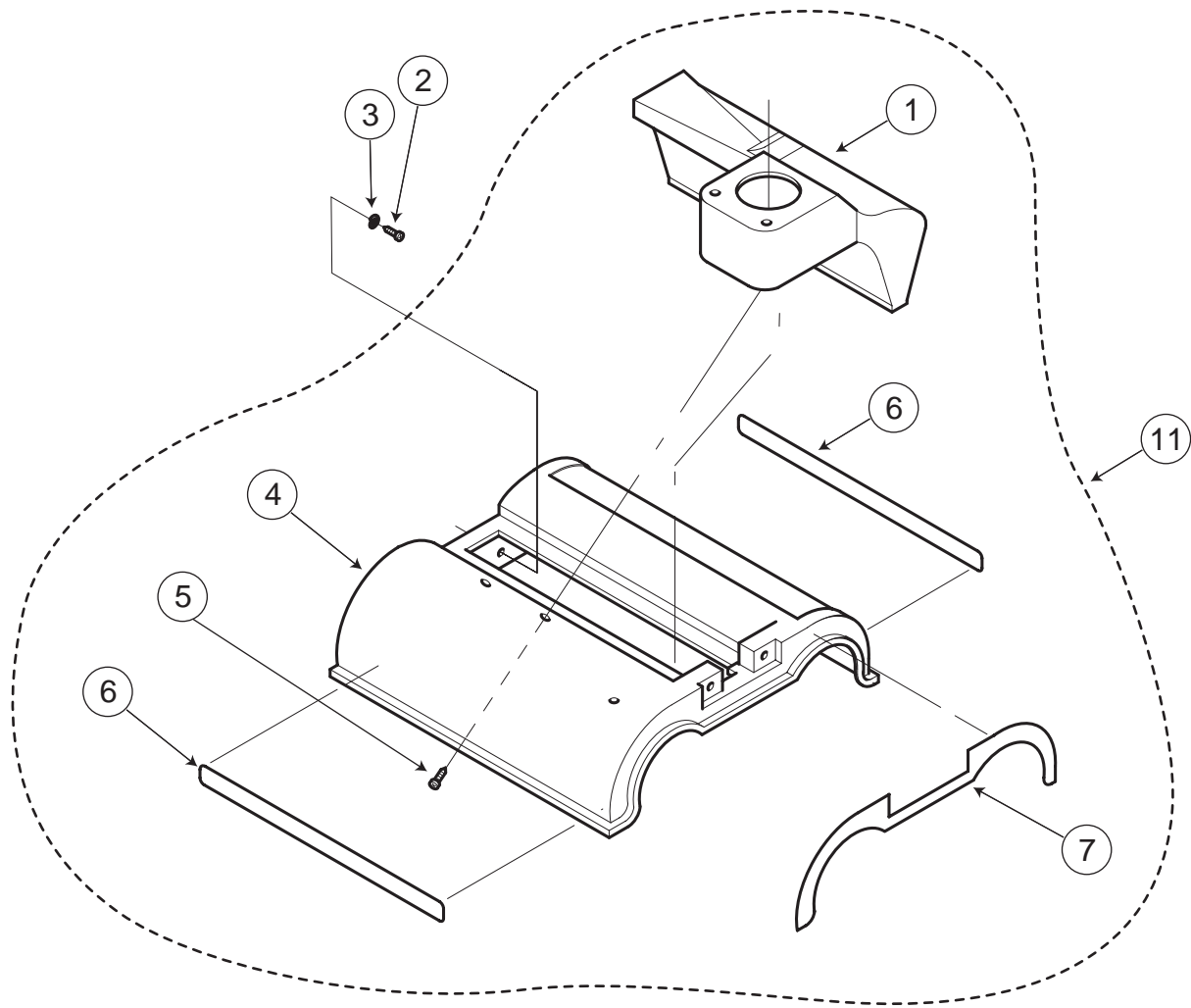


Code No.	Part No.	Description
1	M12010	Gasket
2	U1423	Retaining Ring $\frac{3}{8}$ " Shaft (2) Required
3	M12042	Gear-Left Hand
4	U1605A	Woodruff Key (2) Required
5	M12043	Gear-Right Hand
6	M12018	Inner Gearcase
7	M9002	Bearing (2) Required
8	M12019	Pulley Flange (2) Required
9	M12044	Pulley Shaft (2) Required
10	M12008A	Pulley Cap (2) Required
11	D277	Lockwasher #10 (2) Required
12	F2771	Screw 10-32 x $\frac{1}{2}$ " (2) Required
13	M12015B	Belt-Long
14	M12014B	Belt-Short
15	M13018	Hairpin Cotter
16	M30178	Clevis Pin $\frac{3}{16}$ " dia. x $1\frac{1}{4}$ "
17	M12011A	Screw 10-32 x $1\frac{3}{16}$ " (9) Required
18	M13015	Screw 6-32 x $1\frac{1}{4}$ " (5) Required
19	M30066	Gearcase Cover
20	M12013	Dowel Pin $\frac{1}{8}$ " dia. x $\frac{3}{4}$ " (2) Required
21	*M12012	Grease-Lithium Base
22	M12040	Inner Gearcase Assembly

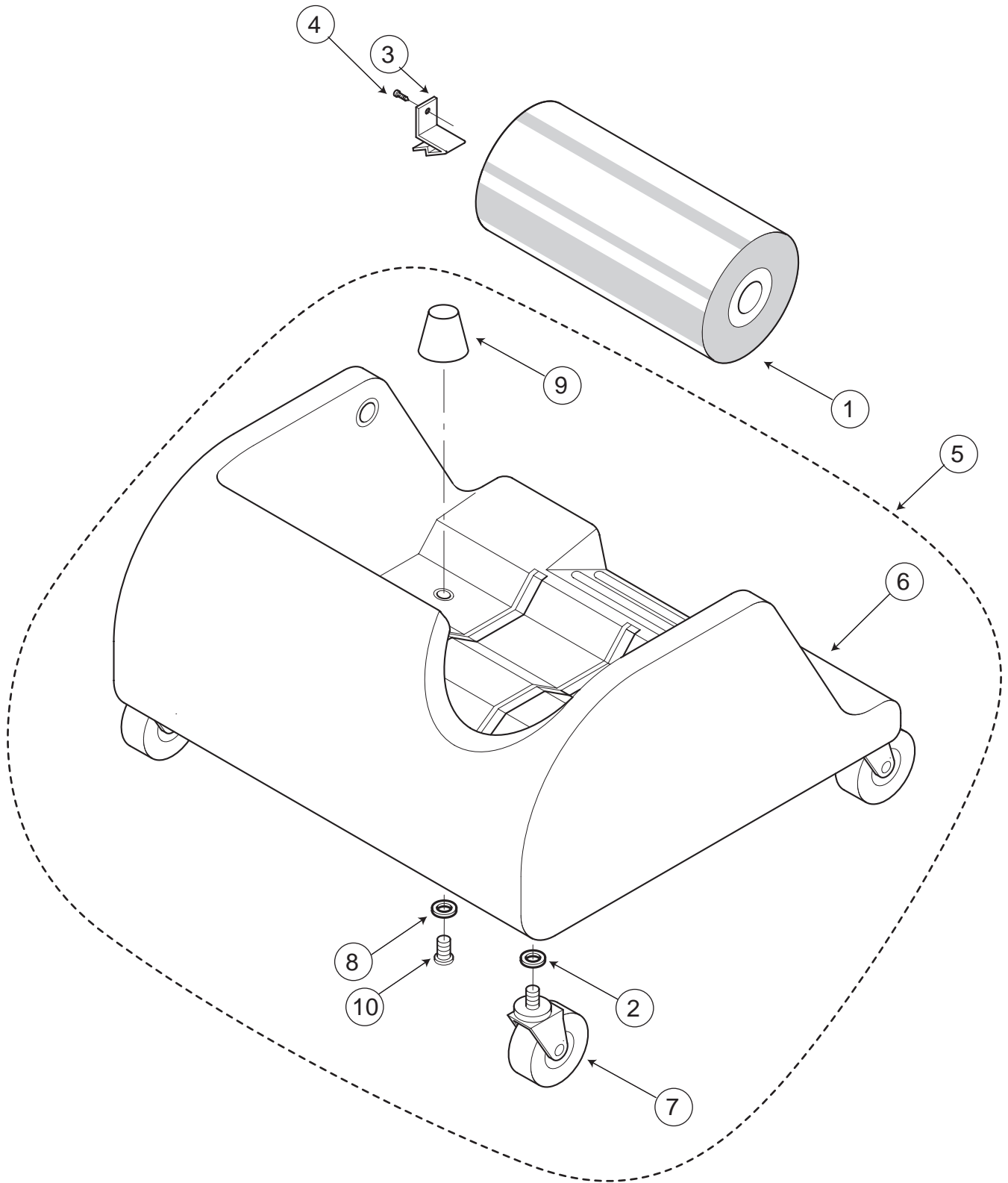
* Not Illustrated

Code No.	Part No.	Description
1	M30116	Supply Cord-North American
2	M40401	Supply Cord-European
3	M40402	Supply Cord-UK
4	M40403	Supply Cord-Swiss
5	M30145	Screw 8-32 x 1/2" Thread Forming (7) Required 5A (2) Required - Motor Shroud to Outer Gearcase 5B (2) Required - Bottom Cover to Outer Gearcase 5C (3) Required - Nozzle Assembly to Motor Shroud
6	U534	Screw 6-32 x 5/8" (2) Required
7	M30089	Cord Lock
8	M4256	Cord Inlet Connector
9	M30143	Decal-Accessory Receptacle (T7/T73)
10	M30288	Decal-Twinning Receptacle (T71)
11	F4112	Screw 6-32 x 5/8" (2) Required
12	M30090	Accessory Receptacle
13	H1072	Screw 8-32 x 1/2" (2) Required (Inner Hood to Motor Shroud)
14	466A	Nut 8-32 (2) Required - Hood to Gearcase
15	M30139	Decal-Brush Guard Release
16	M30362	Screw 6-32 x 1/2"
17	M30075	Button-Brush Guard Release
18	M30077	Spring
19	M30074	Housing-Brush Guard Release
20	M30076	Shaft-Brush Guard Release
21	M30093	Gasket-Motor Exhaust
22	M30071	Backing Plate
23	F1129	Nut - 6-32 (4) Required 23A (2) Required - Cord Lock to Motor Shroud 23B (2) Required - Accessory Receptacle to Motor Shroud
24	M30124	Dual Machine Twinning Cord-100/120v (T7/T73)
25	M30125	Dual Machine Twinning Cord-220/240v (T71)
26	* MISC	Wire Assemblies (See Wiring Diagram)
27	* M30367	Decal - Switch 220/240v (T71)
28	* M30382	Circuit Breaker 220/240v (T71)
29	M30065	Motor Shroud
30	M30369	Motor Shroud (With Hole for Circuit Breaker) (T71)
31	M30105	Bottom Cover
32	M30086	Cap-Carbon Brush Access (2) Required
33	M30083	Intake Air Filter (2) Required
34	M30072	Nut-Switch (2) Required
35	M30092	Switch-On/Off-120v (2) Required (T7/T73)
36	M30088	Switch-On/Off-220/240v (2) Required (T71)
37	M30153	Motor Shroud Assembly 100/120v (T7/T73) (Includes Code # 9, 14, 21, 29, 33 and 39)
38	M30383	Motor Shroud Assembly 220/240v (T71) (Includes Code # 10, 14, 21, 27, 30, 33, 39 and 40)
39	M30046	Decal-Host Machine
40	M30533	Motor Shroud Assembly with Switches-100/120v (T7/T73) (Includes Code # 6, 7, 8, 11, 12, 22, 23A, 23B, 32,34, 35 and 37)
41	M30534	Motor Shroud Assembly with Switches-220/240v (T71) (Includes Code # 6, 7, 8, 11, 12, 22, 23A, 23B, 27, 28, 32,34, 36 and 38)
42	* M30368	Decal - Circuit Breaker 220/240v (2) Required (T71)
43	M30135	Hook Fastener (2) Required

* Not Illustrated



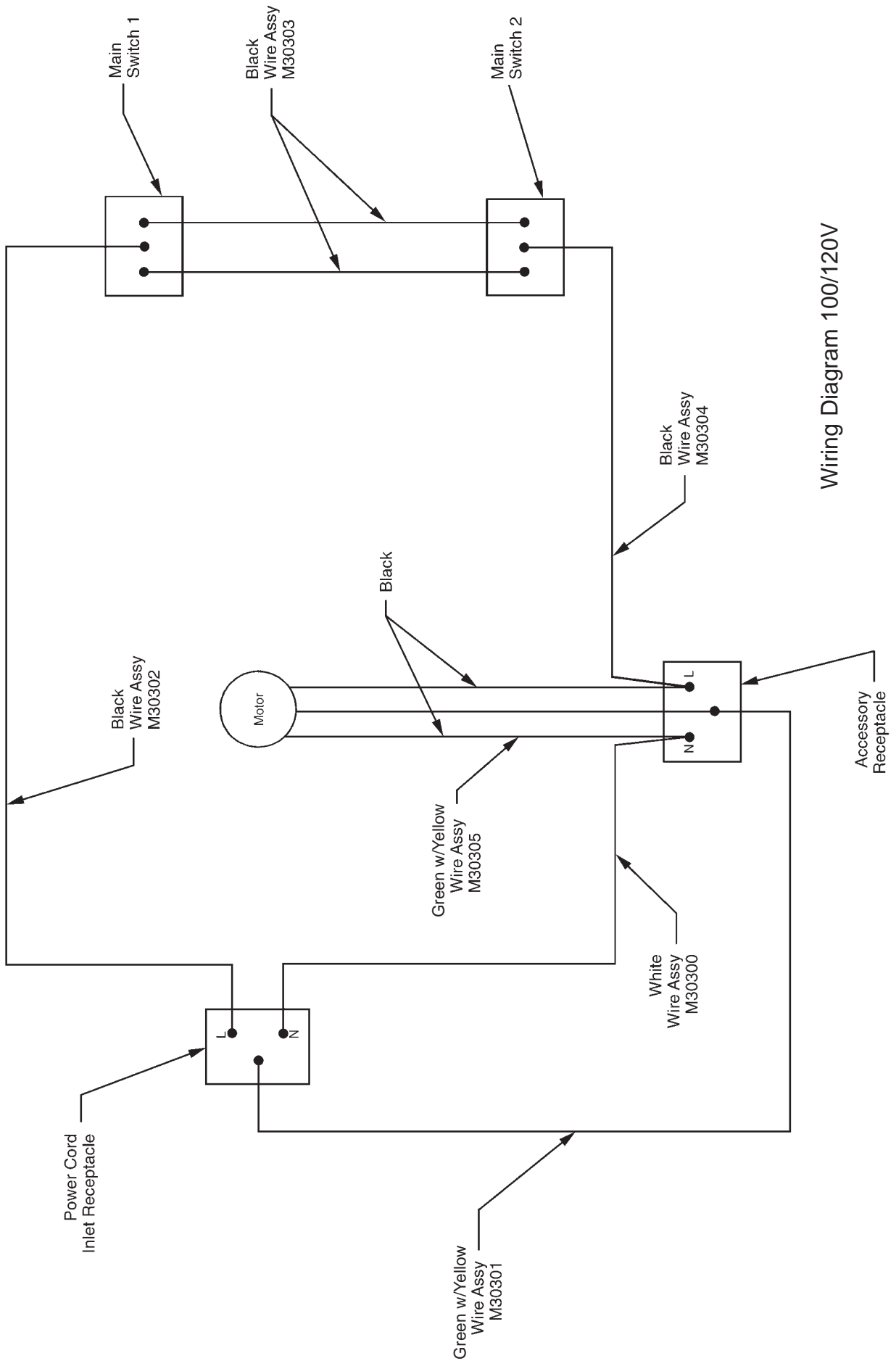
Code No.	Part No.	Description
1	M30508	Pickup Nozzle
2	V113	Screw 10-24 x $\frac{5}{16}$ " (2) Required (Nozzle / Hood Asm to Gearcase)
3	U1018	Washer #10 (2) Required
4	M30063	Inner Hood
5	M30145	Screw 8-32 x $\frac{1}{2}$ " (3) Required (Nozzle to Hood)
6	M30284	Gasket-Inner Hood, Side (2) Required
7	M30283	Gasket-Inner Hood, End (1) Required
8	M30393	Skirt - Short
9	M30392	Skirt - End piece
10	M30394	Skirt - Long
11	M30496	Nozzle / Inner Hood Assembly (Includes Code # 1, 4-7)



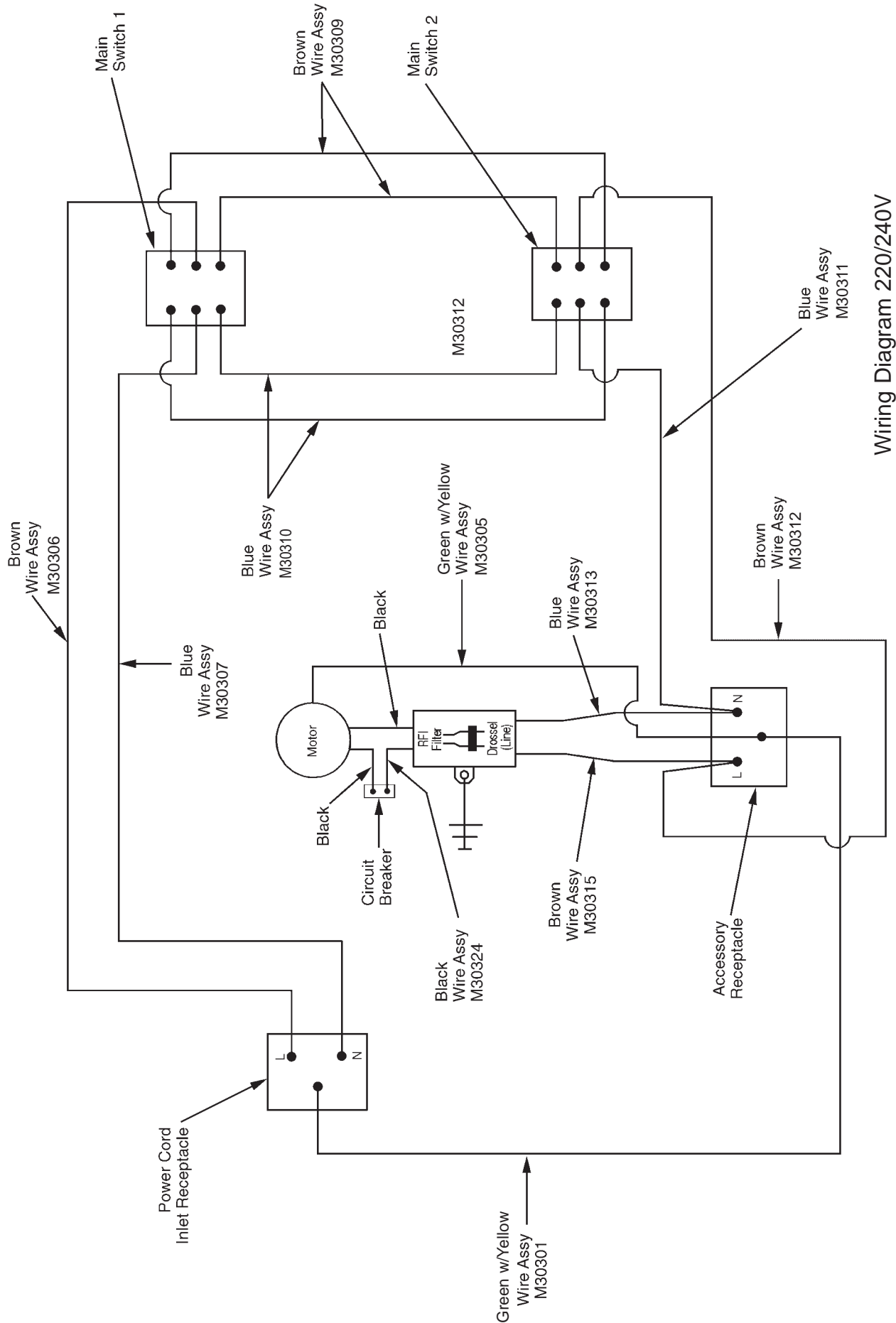
Code No.	Part No.	Description
1	See Below	Brush - Contact your Distributor for various brush options (2) Required
2	M30512	Washer - Flat (4) Required
3	M1014	Spring Clip (1) Required Per Brush
4	V703A	Screw #4 x 3/8" Self-Tapping (1) Required Per Brush
5	M40300	Tray Complete (includes Code # 2, 6-10)
6	M30011	Tray
7	M30034	Caster (4) Required
8	M30073	Washer-Flat (2) Required
9	M30211	Tray Standoff (2) Required
10	M6419A	Screw 10-32 x 1 1/4" (2) Required

Carton with (2) Brushes

Part No.	Description	Type
M1018	Brush Asm., Gold	(Soft)
M1019	Brush Asm., Gold/White	(Med. Soft)
M1020	Brush Asm., White	(Standard)
M1021	Brush Asm., White/Black	(Med. Stiff)
M1022	Brush Asm., Black	(Stiff)



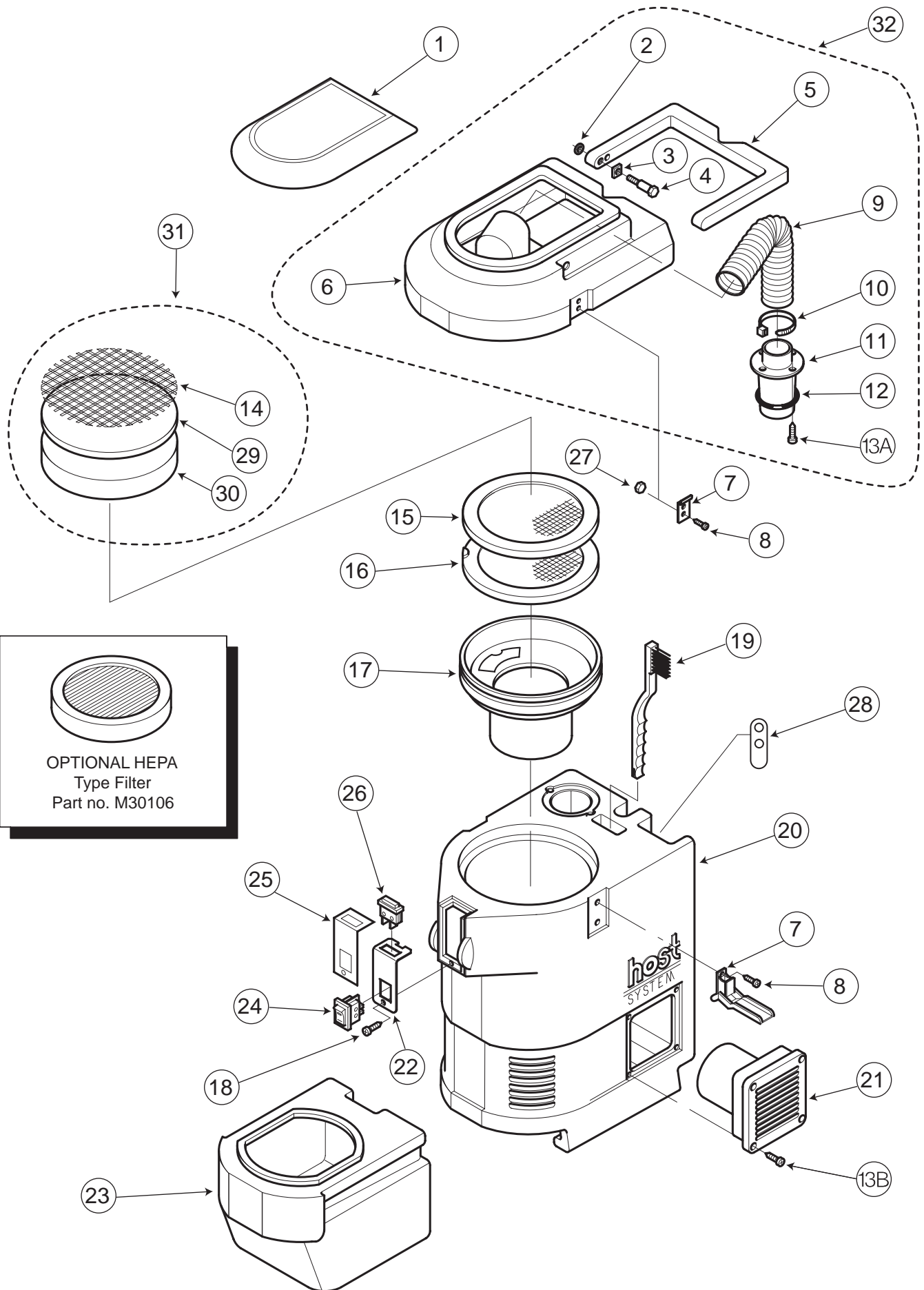
Wiring Diagram 100/120V



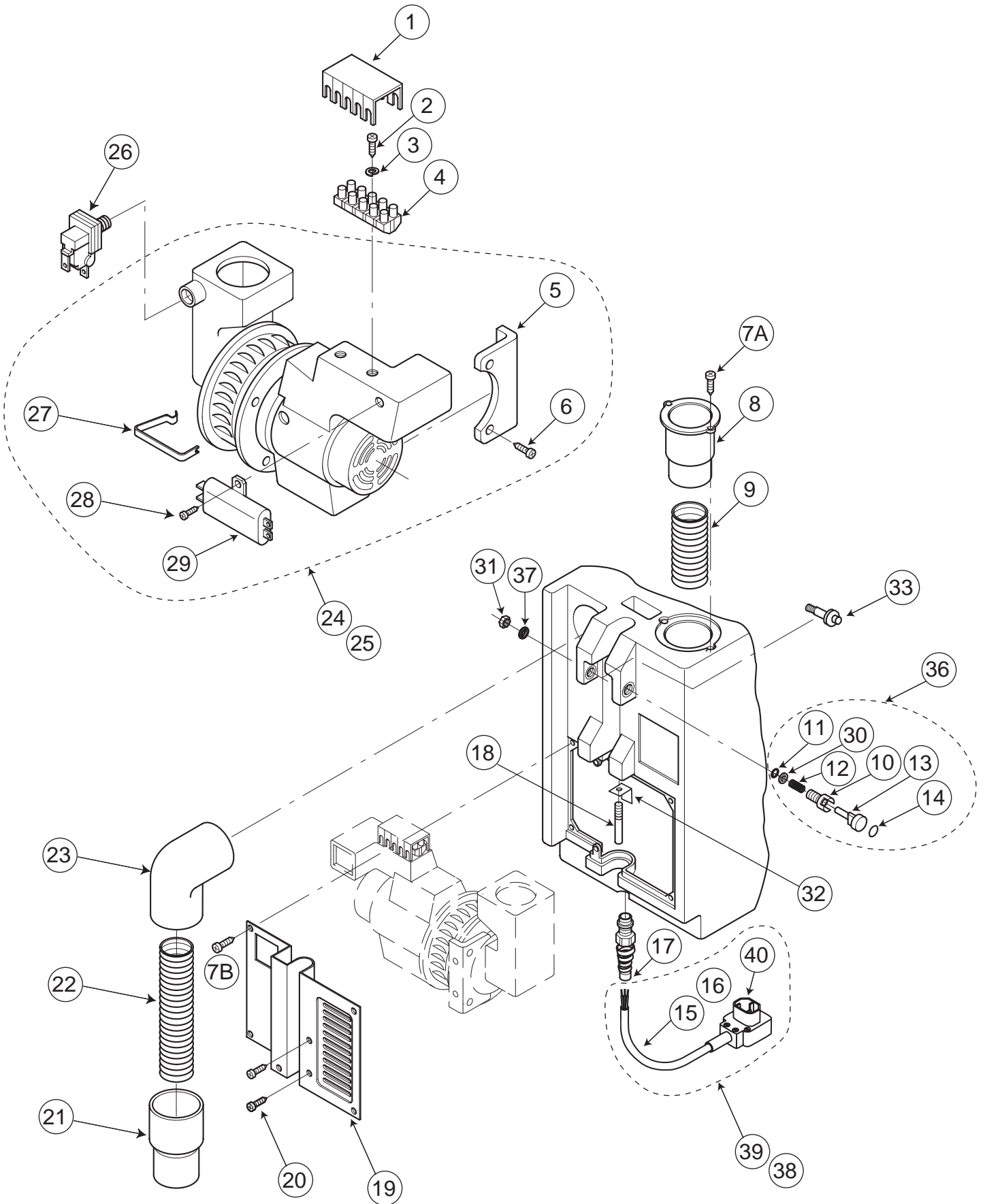
Wiring Diagram 220/240V

<i>Section II - M40000/M40001/M40003 VAC Parts</i> _____	25
<i>Vac Assembly</i> _____	26
<i>Vac Motor Assembly</i> _____	28
<i>Vac Wiring Diagram - 100/120V</i> _____	30
<i>Vac Wiring Diagram - 220/240V</i> _____	31



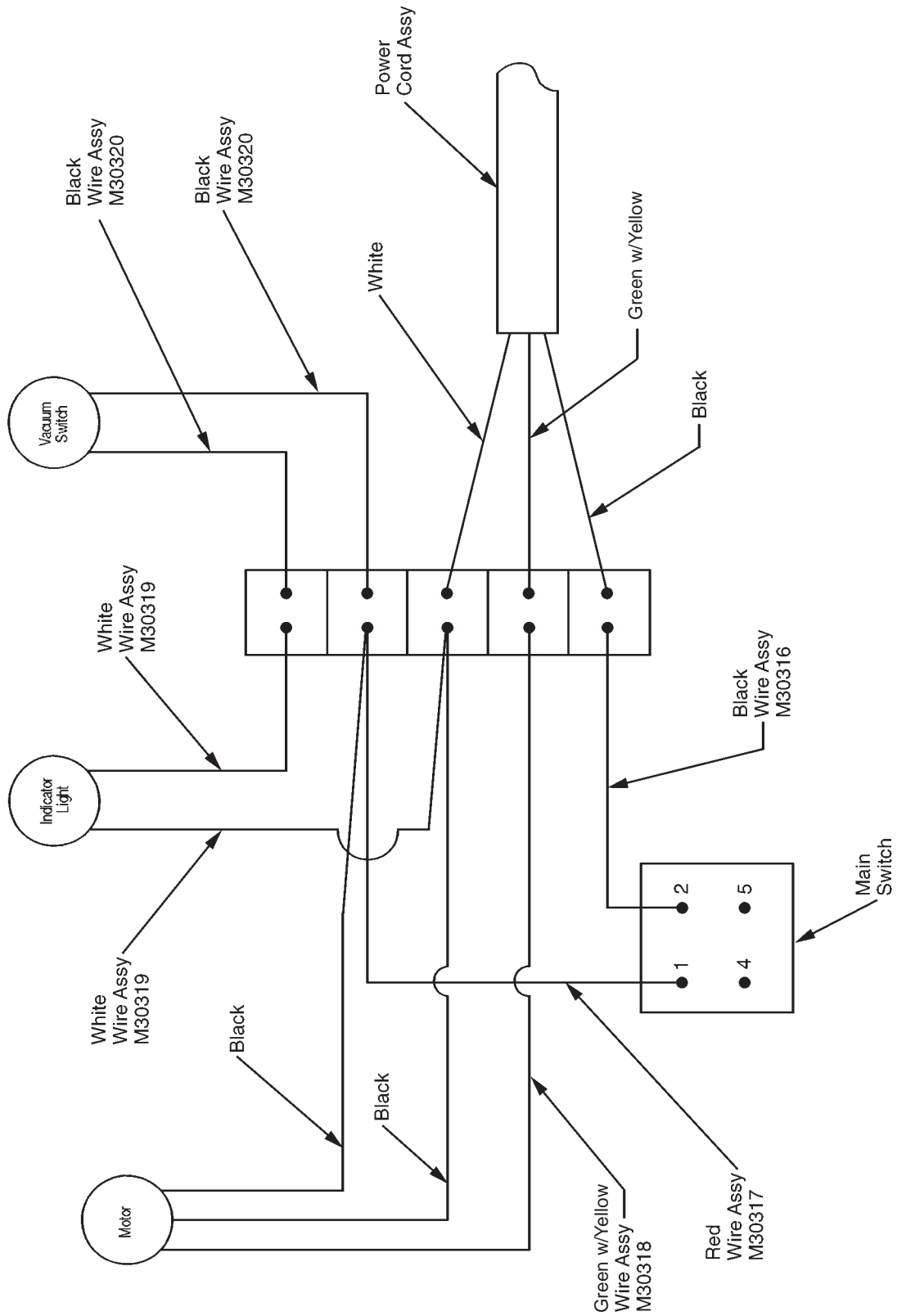


Code No.	Item No.	Description
1	M30002	Filter Housing Cover
2	W529	Nylon Washer-Flat (2) Required
3	M30172	Washer-Square (2) Required
4	L2012	Screw-Shoulder (2) Required
5	M30010	Carrying Handle
6	M30003	Filter Housing
7	M30028	Latch Assembly (2) Required
8	H1072	Screw 8-32 x ½" (8) Required
9	M30048	Vacuum Hose
10	X206	Cable Tie
11	M30021	Plug-Filter Housing
12	M30022	O-Ring
13	M30145	Screw 8-32 x ½" Thread Forming (8) Required 13A (4) Required Plug to Filter Housing 13B (4) Required Cover to Pod
14	M30389	Backing Screen
15	M30040	Secondary Filter -Black Seal
16	M30039	Primary Filter - Orange Seal
17	M30152	Separator Assembly
18	V703A	Screw #4 x ¾" Self-Tapping (1) Required
19	M30058	Brush Filter Cleaning
20	M30000	Vac Pod
21	M30009	Cover-Motor Cooling Air Intake
22	M30015	Switch Plate
23	M30255	Recovery Bin Assembly
24	M30050	On/Off Switch
25	M30043	Decal-Switch Plate
26	M30051	Indicator Lamp
27	466A	Nut – 8-32 (4) Required
28	M30213	Catch Plate 8-32 Thread (2) Required
29	M30390	Felt Filter - White
30	M30391	Foam Filter - Gray
31	M30474	3 Pc Filter Pack (Includes Code # 14, 29, and 30)
32	M30151	Filter Housing Assembly (Includes Code # 2-6, 9-12 and 13A)

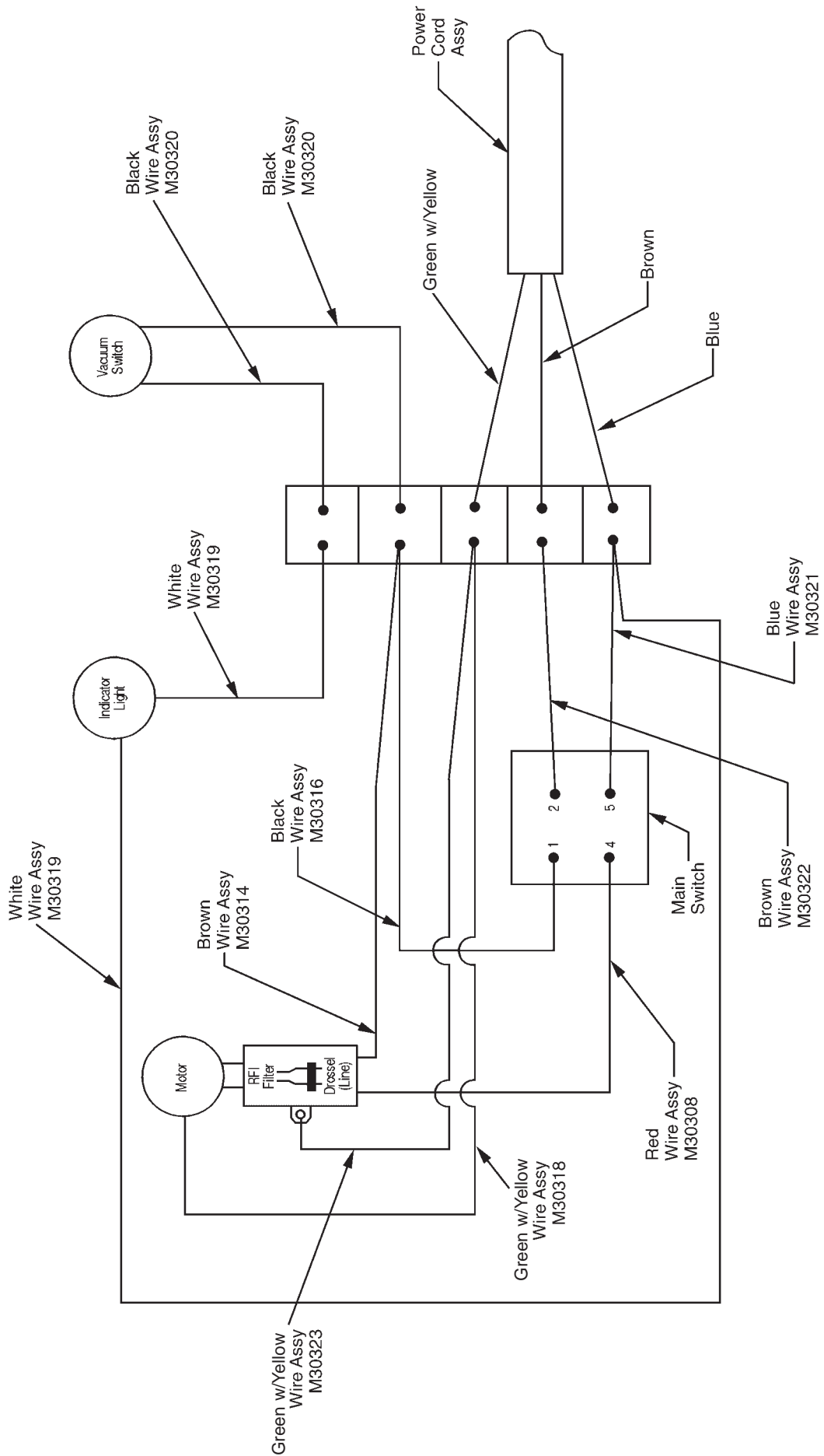


Code No.	Part No.	Description
1	M30054	Terminal Block Cover
2	M30147	Screw 8-32 x $\frac{7}{8}$ " (2) Required
3	M5005	Lockwasher #8 (2) Required
4	M30053	Terminal Block
5	M30016	Motor Mounting Plate
6	M30216	Screw #10 x $\frac{5}{8}$ " Self-Tapping (4) Required
7	M30145	Screw 8-32 x $\frac{1}{2}$ " Thread Forming (7) Required 7A (2) Flange to Pod 7B (5) Back Plate to Pod
8	M30020	Flange-Pod
9	M30049	Vacuum Hose
10	M30041	Retaining Nut-Pod Release
11	M30103	Retaining Ring $\frac{3}{8}$ " Shaft
12	M30111	Spring-Compression
13	M30042	Plunger-Vac Pod Release
14	M30138	Decal-Vac Pod Release
15	M30398	Power Supply Cord-100/120V
16	M30399	Power Supply Cord-220/240V
17	M30057	Strain Relief
18	M30036	Locating Pin-Vac Pod (2) Required
19	M30008	Back Plate
20	M7053B	Screw 10-32 x $\frac{3}{8}$ " (2) Required
21	M30027	Hose Cuff
22	M30047	Vacuum Hose-Black
23	M30156	Vacuum Elbow Assembly
24	M30150	Vac Motor Assembly 100/120V (Includes Code # 5, 6, and 27)
25	M30221	Vacuum Motor Assembly 220/240V (Includes Code # 5, 6, 27, 28 and 29)
26	M30052	Vacuum Sensor Switch
27	M30171	Spring Clip (2) Required
28	D174B	Screw 8-32 x $\frac{1}{4}$ " (220/240 Volt Only)
29	M4222	RFI Filter (220/240 Volt Only) (1) Required
30	M30149	Washer-Flat
31	X422	Nut - 10-24
32	M30197	L-Bracket (2) Required
33	M30199	Alignment Post
34	*X517	Replacement Carbon Brush Assembly 100/120V
35	*M30220	Replacement Carbon Brush Assembly 220/240V
36	M30364	Vac Pod Release Assembly (Includes Code # 10, 11, 12, 13, 14, and 30)
37	M30073	Washer - Flat
38	M30531	Power Supply Cord & Plug Assembly - 100/120v (Includes Cord & Plug)
39	M30532	Power Supply Cord & Plug Assembly - 220/240v (Includes Cord & Plug)
40	M30462	Plug, Shrouded Right Angle Male

*Not Illustrated



Wiring Diagram 100/120V



Wiring Diagram 220/240V

© 1995, 2003.
Racine Industries, Inc.
1405 Sixteenth Street
P.O. Box 1648
Racine, WI 53401 USA

 1-262-637-4491
 1-800-558-9439
FAX 1-262-637-0558
www.hostcarpetcleaning.com

host[®]
The Dry Extraction
Carpet Cleaning System